

SECTION BELGIAN TRANSPLANTCOORDINATORS

BTS 2014



DONOR
&
TRANSPLANT
STATISTICS

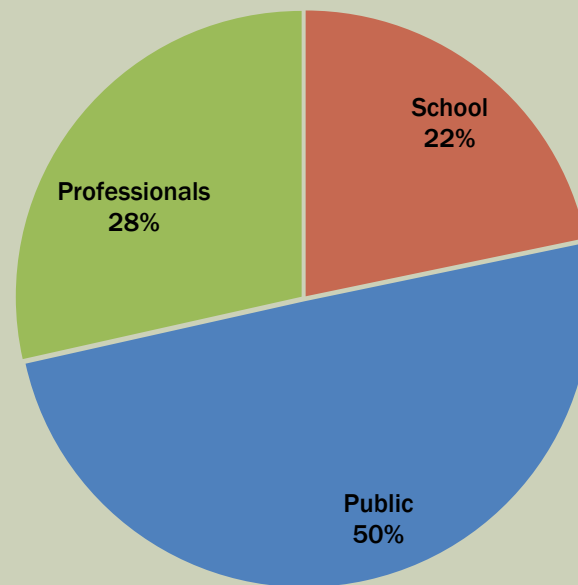


BELGIAN TRANSPLANT COORDINATORS

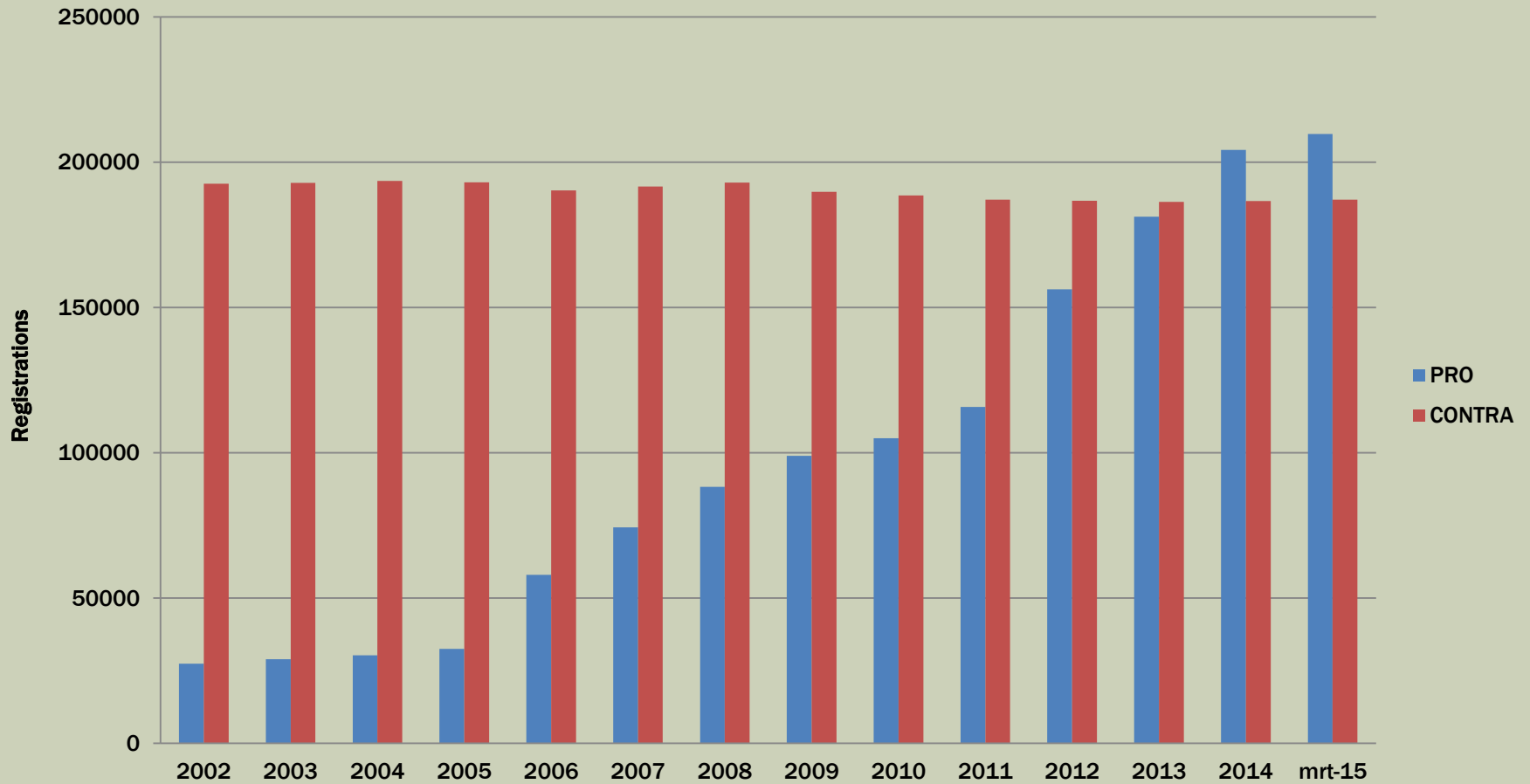
- **President:** I. Haentjens (UZG)
- **Vice-President:** D. Van Deynse (UCL)
- **Be-KPAC** G.Van Beeumen(UZA), Nelly Mauws(UZG)
- **Be-ThAC** W.Van Donink(UZA), D.Claes(UZL)
- **Be-LIAC** M.H.Delbouille(Ulg), Colenbie Luc (UZG)
- **Be-OPC** M.H.Delbouille(Ulg), Nelly Mauws(UZG), Gerda Van Beeumen(UZA), Bruno Desschans(UZL), Tineke Bogaerts(VUB), Dominique Van Deynse(UCL), Gheysens Johan(Erasm)
- **LDEP** Nelly Mauws(UZG)
- **Belgian Transplant Council:** D. Van Deynse(UCL), I. Haentjens (UZG)
- **Belgian Transplant Society:** I. Haentjens (UZG), D. Van Deynse(UCL)
- **OPC Eurotransplant:** Bruno Desschans(UZL)
- **CSWG Eurotransplant:** W. Van Donink(UZA)
- **Financial Committee Eurotransplant:** L. Colenbie(UZG)
- **ETCO National Keymember:** I.Haentjens (UZG)

ACTIVITIES 2014

- NAVADO-day: 19 oct 2014 in Gits (W-VI)
- EDHEP training: 7 sessions
- PRESENTATIONS:



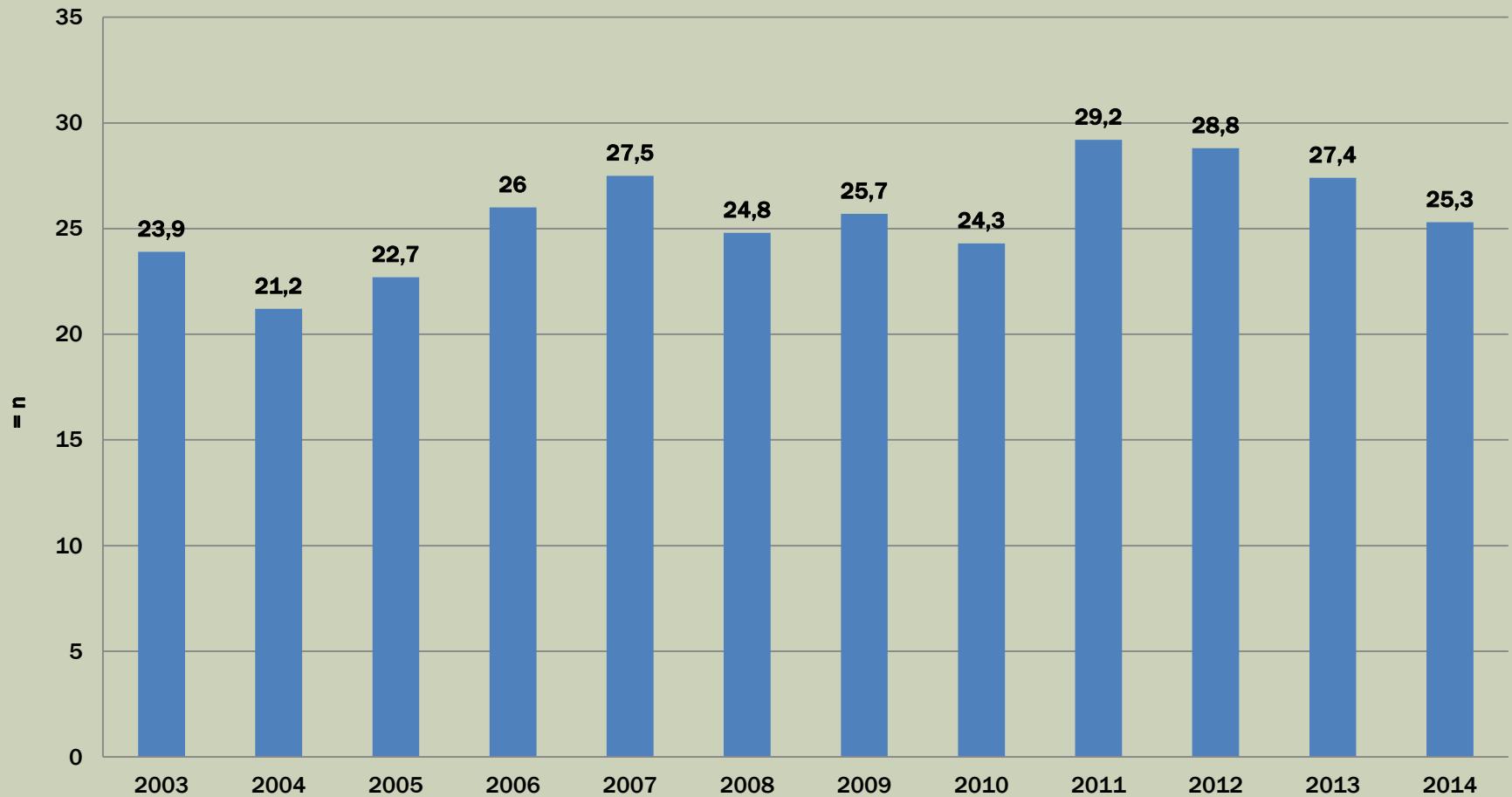
REGISTER NATIONAL DATABANK



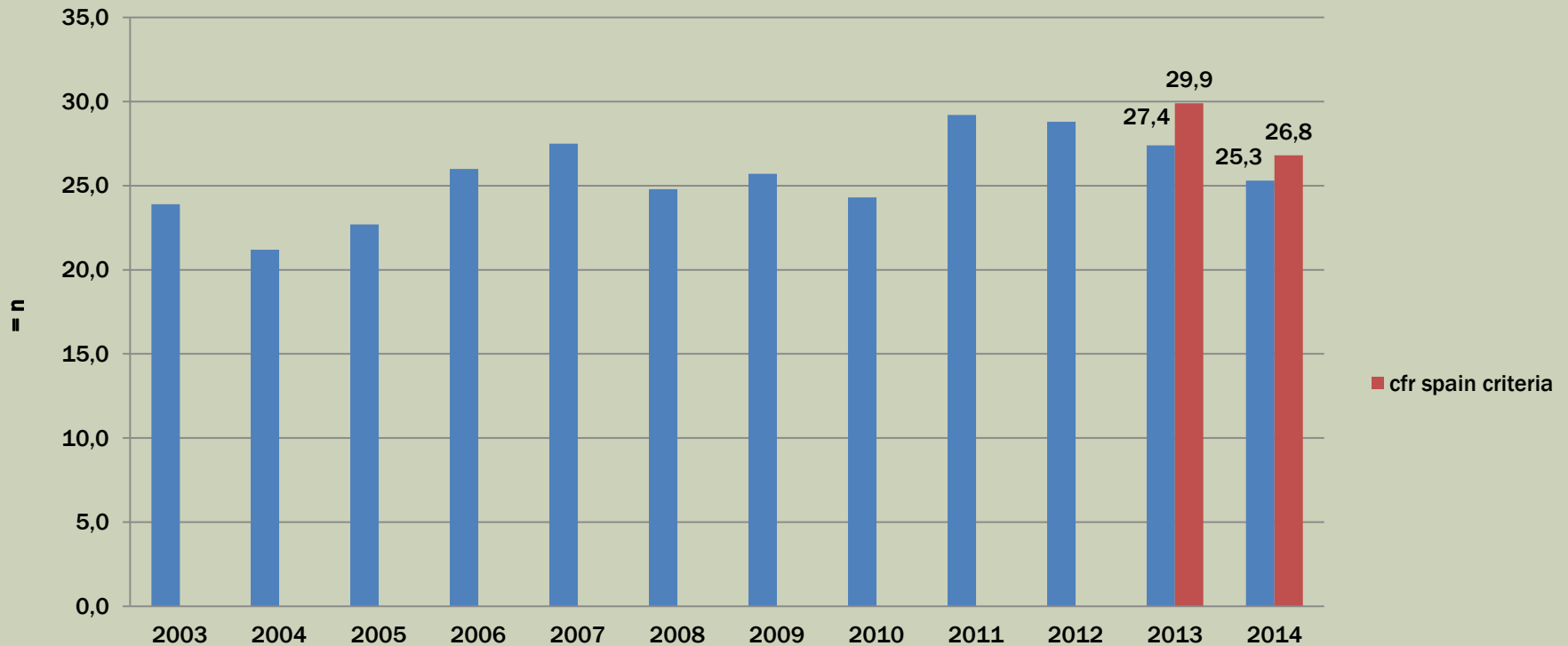
DONOR STATISTICS 2014



DONORS PMI / BELGIUM

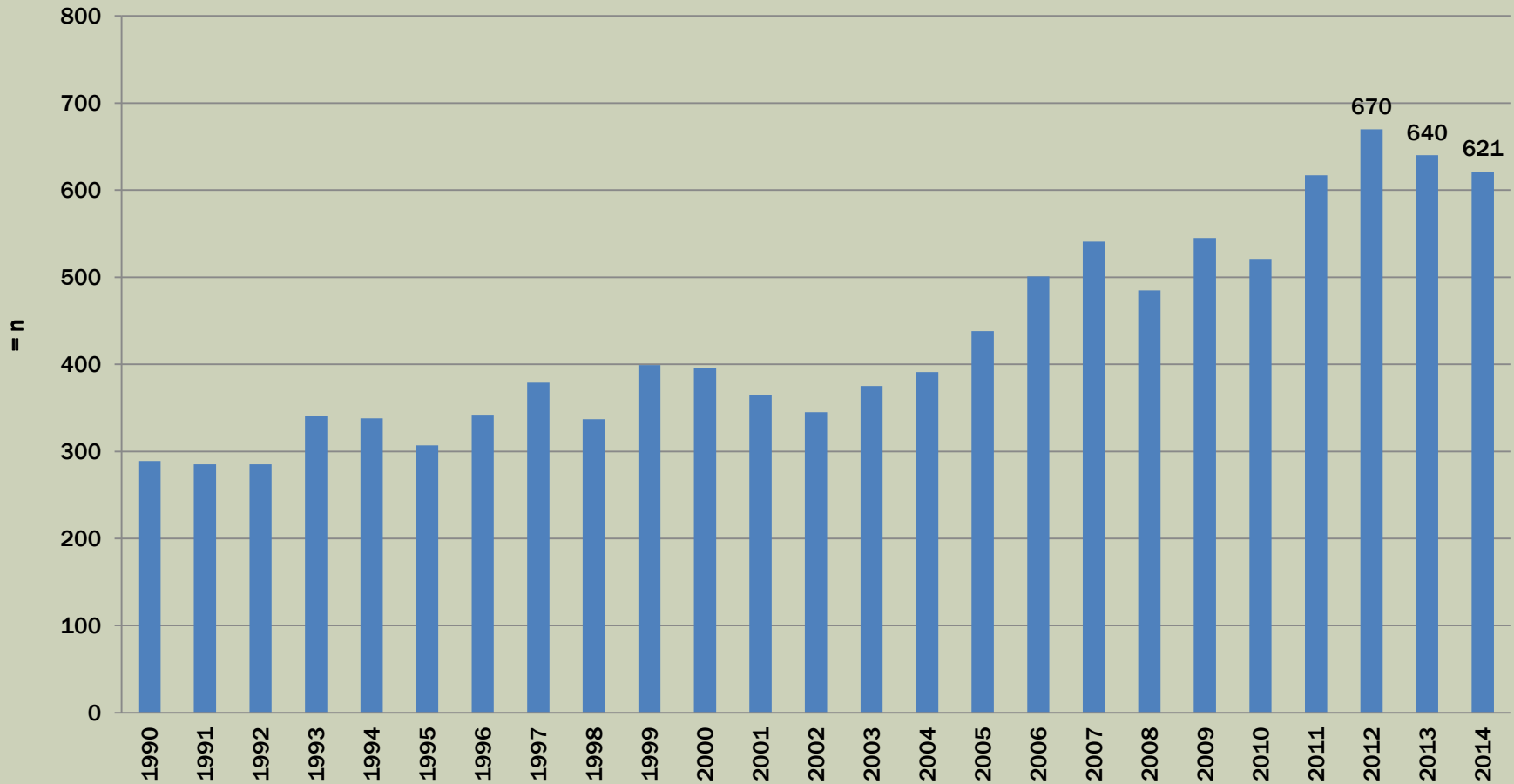


DONORS PMI / BELGIUM VS SPAIN



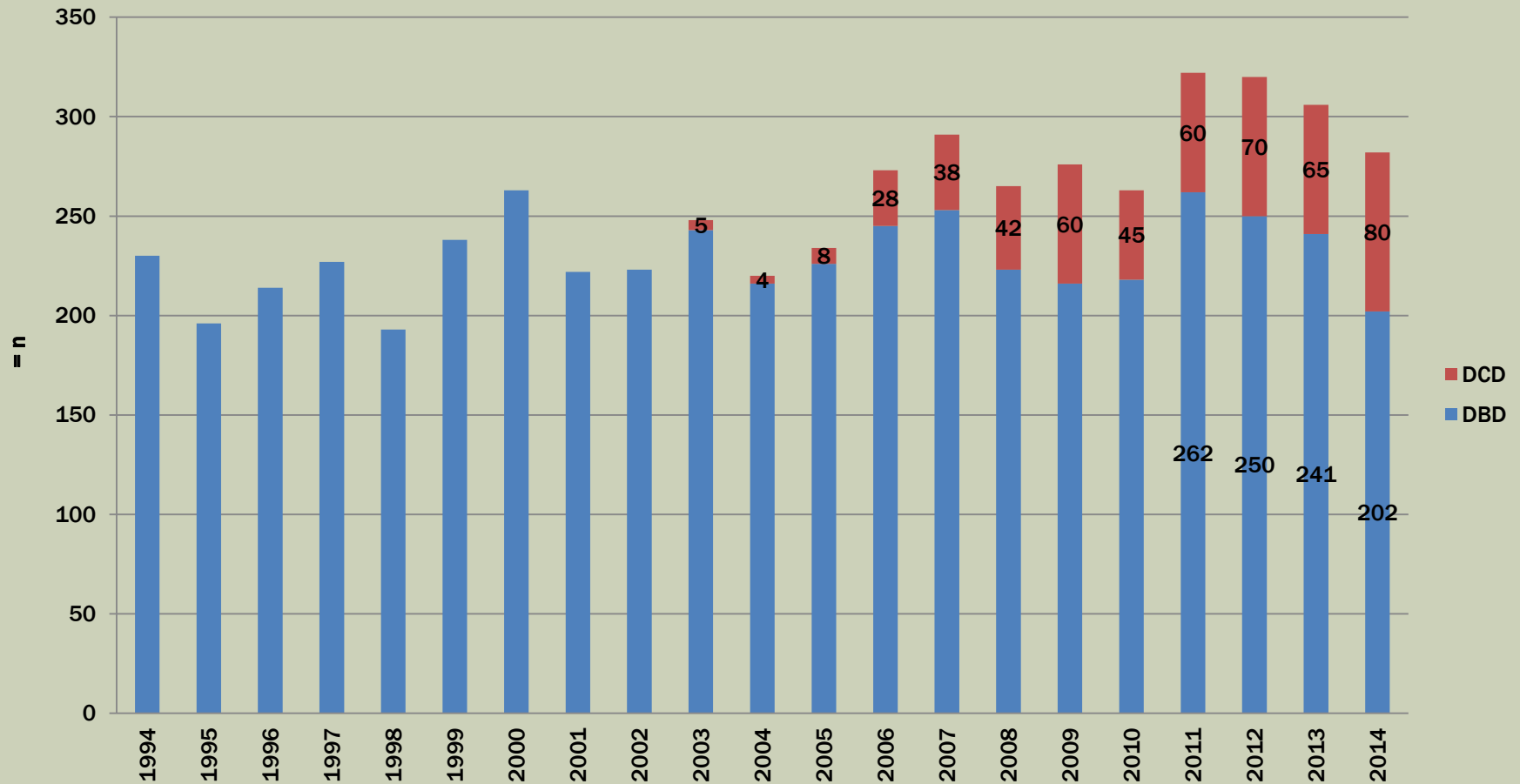
Note: spain criteria donor pmi = incl tissue donor and in situ refusal + medical refusal for organ donation
Underestimation of tissue donors in Belgium, incomplete data !

POTENTIAL DONOR 1990 - 2014



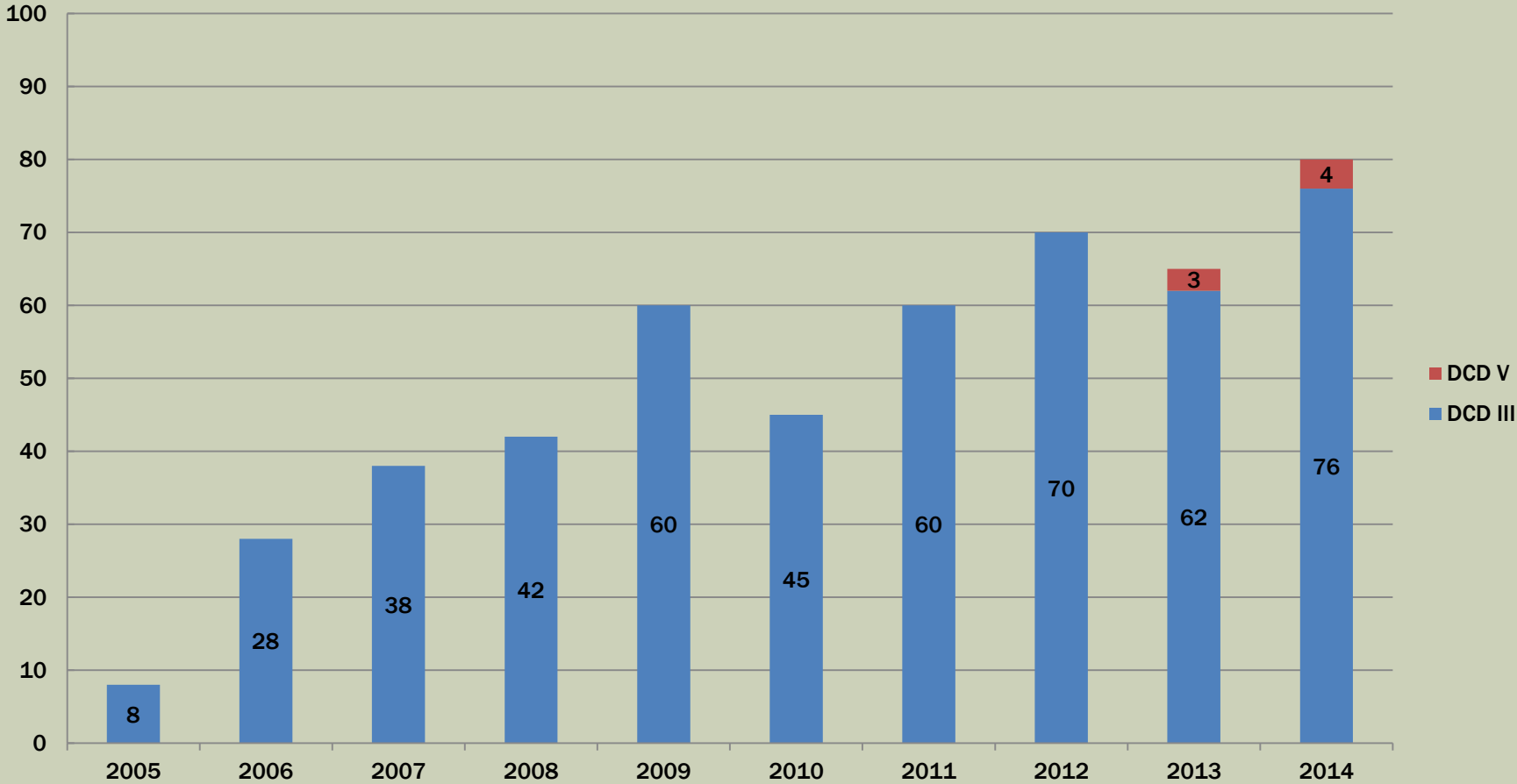
Note: underestimation of potential donors in early years

EFFECTIVE ORGAN DONORS 1994 - 2014

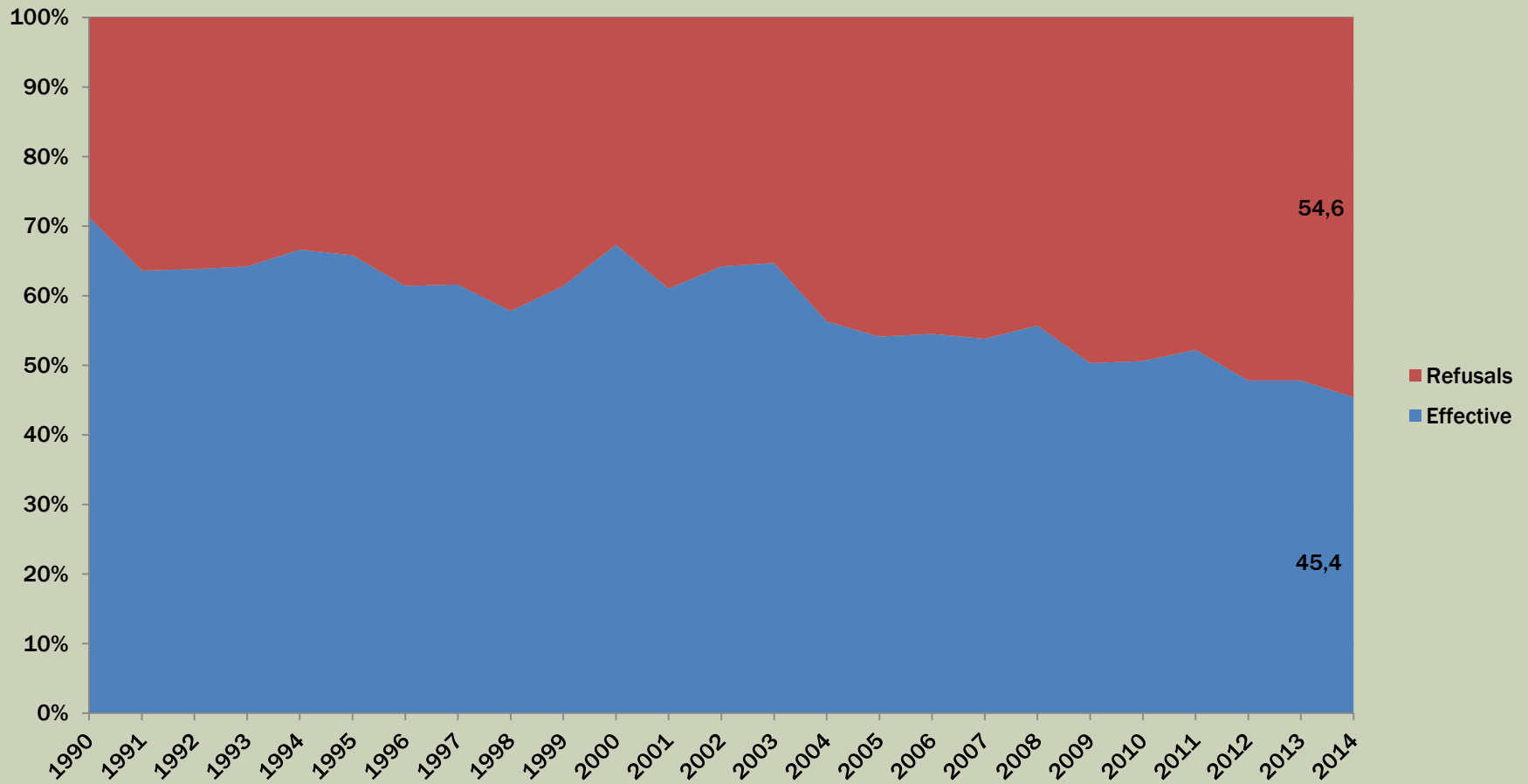


Remark: 36% of donors in university hospitals

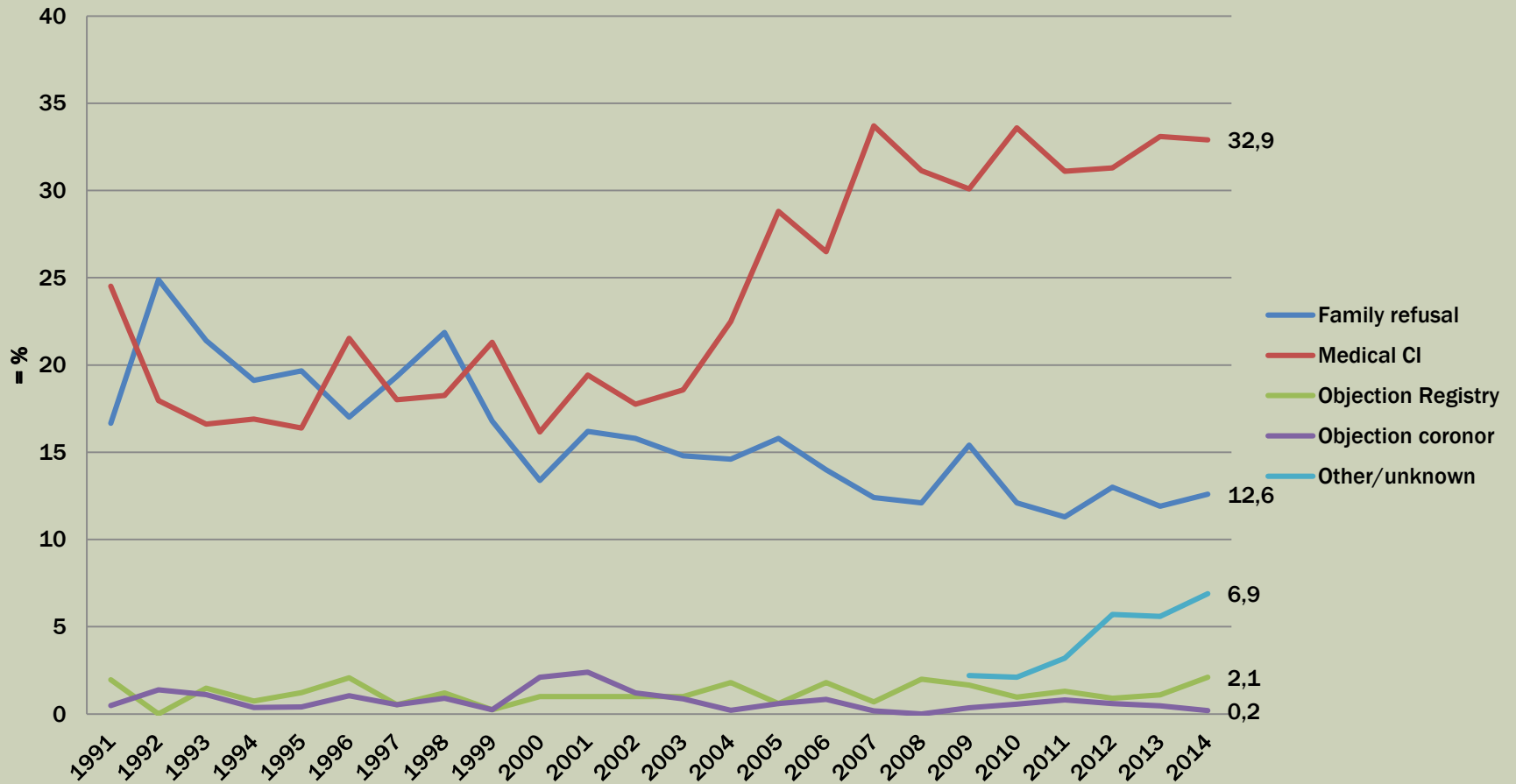
EFFECTIVE DCD 2005 - 2014



% EFFECTIVE ORGAN DONORS 1990 - 2014



REASON OF NO DONATION 1991 - 2014

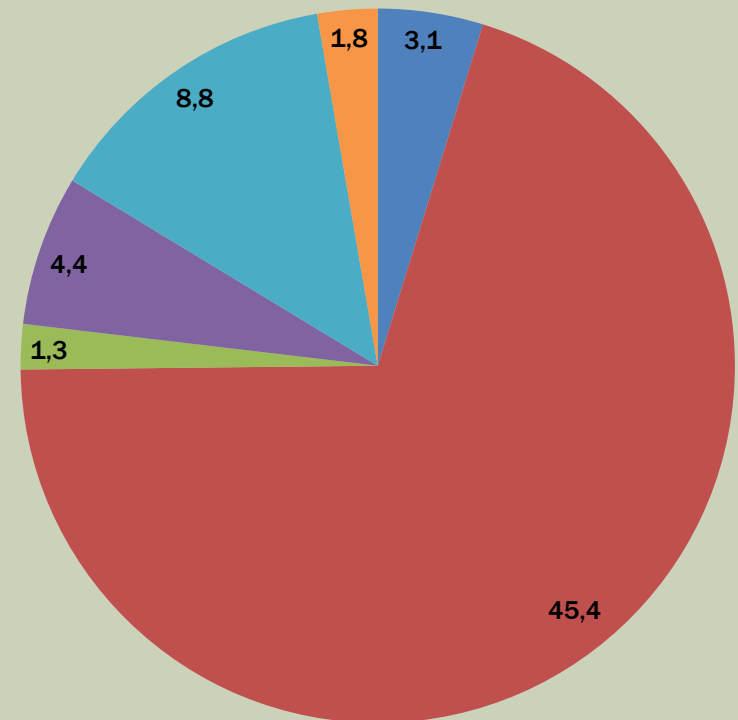
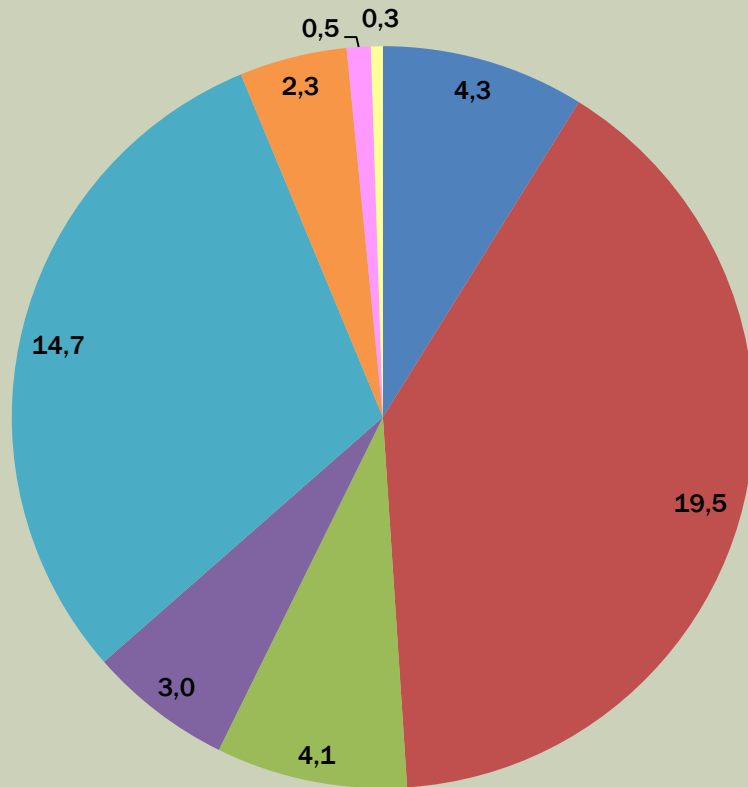


REFUSALS POTENTIAL ORGAN DONORS

REFUSALS	DBD (%)	DCD (%)	All potential (%)
In register	2,3	1,8	2,1
By family			
2014	14,7	8,8	12,6
2013	13,2	9	11,9
2012	13,6	11,6	-
Medical refusal (on file + in situ)			
2014	23,9	48,6	32,9
2013	23	45,5	29,7
2012	23,9	43,3	-

% REFUSAL POTENTIAL DONORS 2014

DBD VS DCD



Medical in situ

Medical on file

Not brain death

Medical in situ

Medical on file

Not brain death

Other

Refusal by relatives

Refusal in registry

Other

Refusal by relatives

Refusal in registry

unknown

Coroner refusal

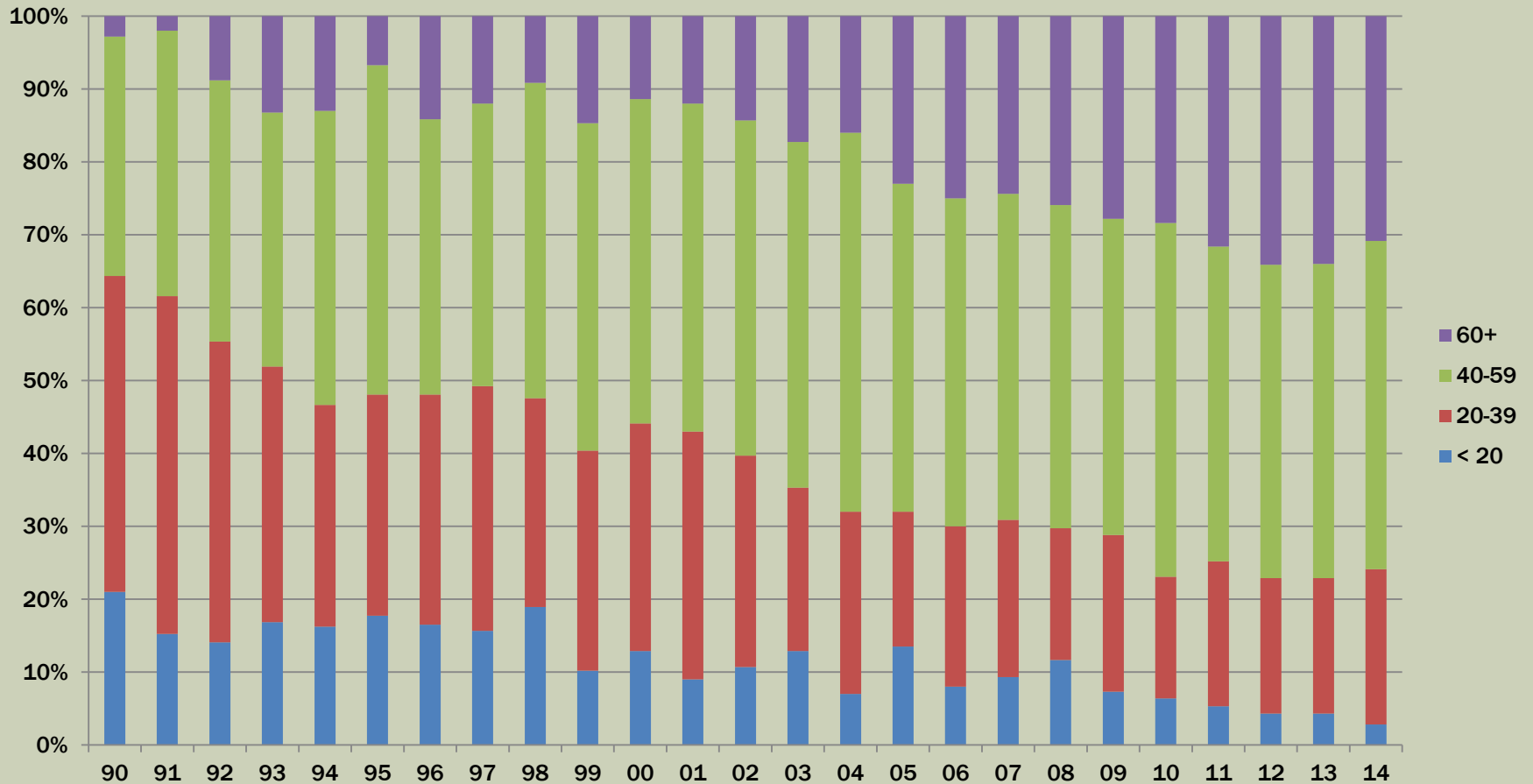
unknown

Coroner refusal

DONOR PROFILE (DECEASED ORGAN DONORS)



AGE OF EFFECTIVE DONORS 1990 - 2014



Note number of donors

1994: 230

vs

2014: 282

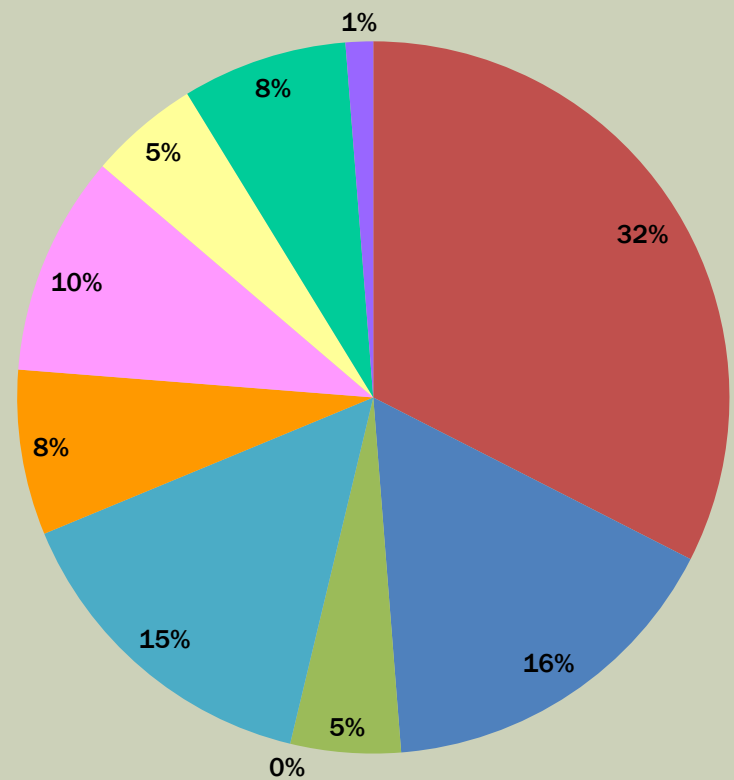
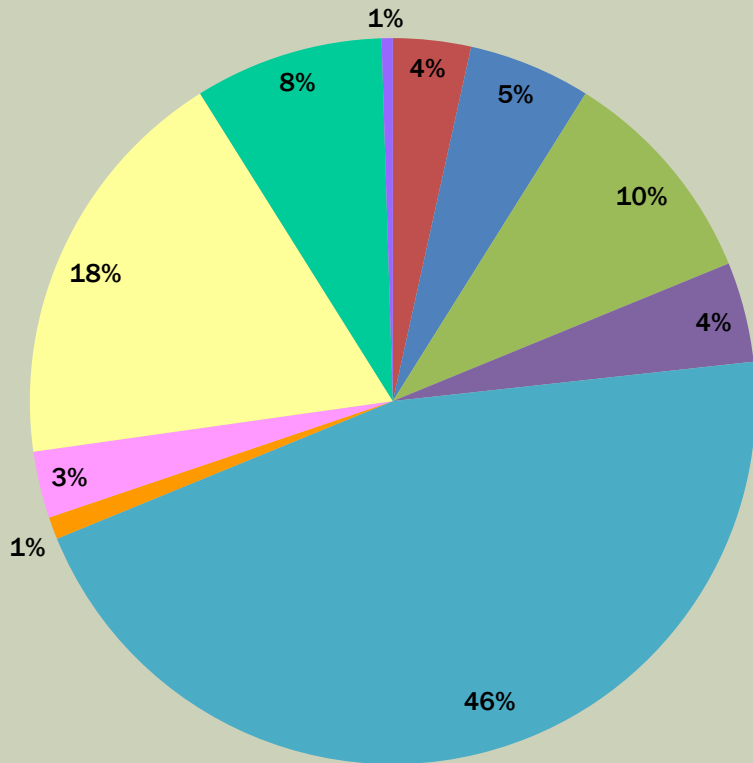
AGE OF ORGAN DONORS 2014

AGE	DBD	DCD	Total
Donor max	86y	76y	86y
Donor min	1y	2y	1y
Mediaan (IQR)	53y (40-64)	50y (41-59)	51y (40-62)
Average	51y	48y	50y

AGE	Heart	Lung	Liver	Kidney	Pancreas
Oldest	58y	79y	86y	79y	49y

CAUSE OF DEATH DONORS 2014

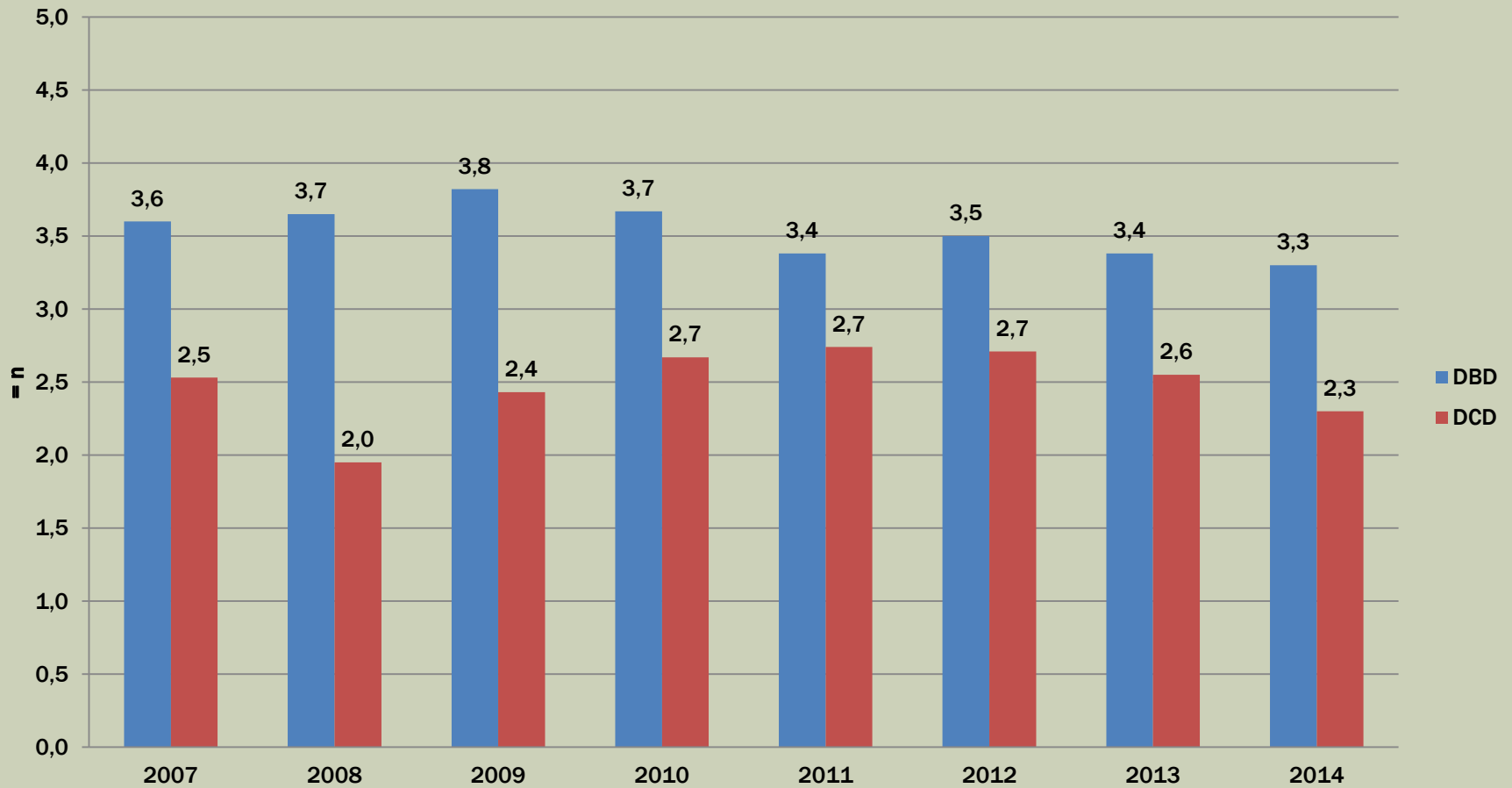
DBD VS DCD



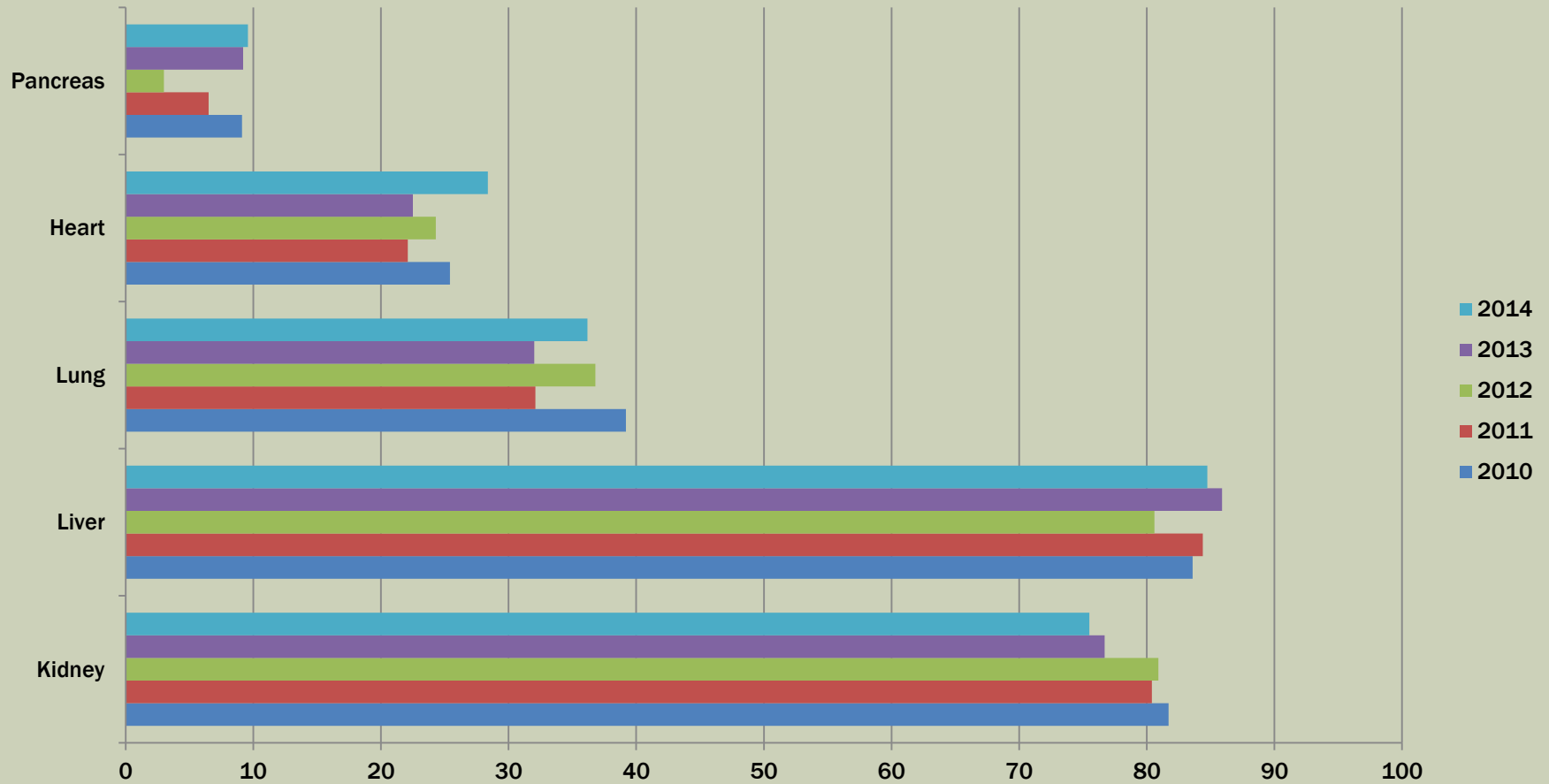
- | | | | | | |
|---|--|--|---|--|--|
| ■ Anoxia / Strangulation | ■ Cardiovascular | ■ Cerebral Ischemia | ■ Anoxia / Strangulation | ■ Cardiovascular | ■ Cerebral Ischemia |
| ■ Suicide (gunshot) | ■ ICB | ■ Intoxication (suicide) | ■ Suicide (gunshot) | ■ ICB | ■ Intoxication (suicide) |
| ■ Other | ■ Trauma (other) | ■ Trauma (road accident) | ■ Other | ■ Trauma (other) | ■ Trauma (road accident) |
| ■ Tumor | | | ■ Tumor | | |

ORGANS USED FOR TX

DBD VS DCD



% USED ORGANS OF EFFECTIVE DONORS 2010 - 2014

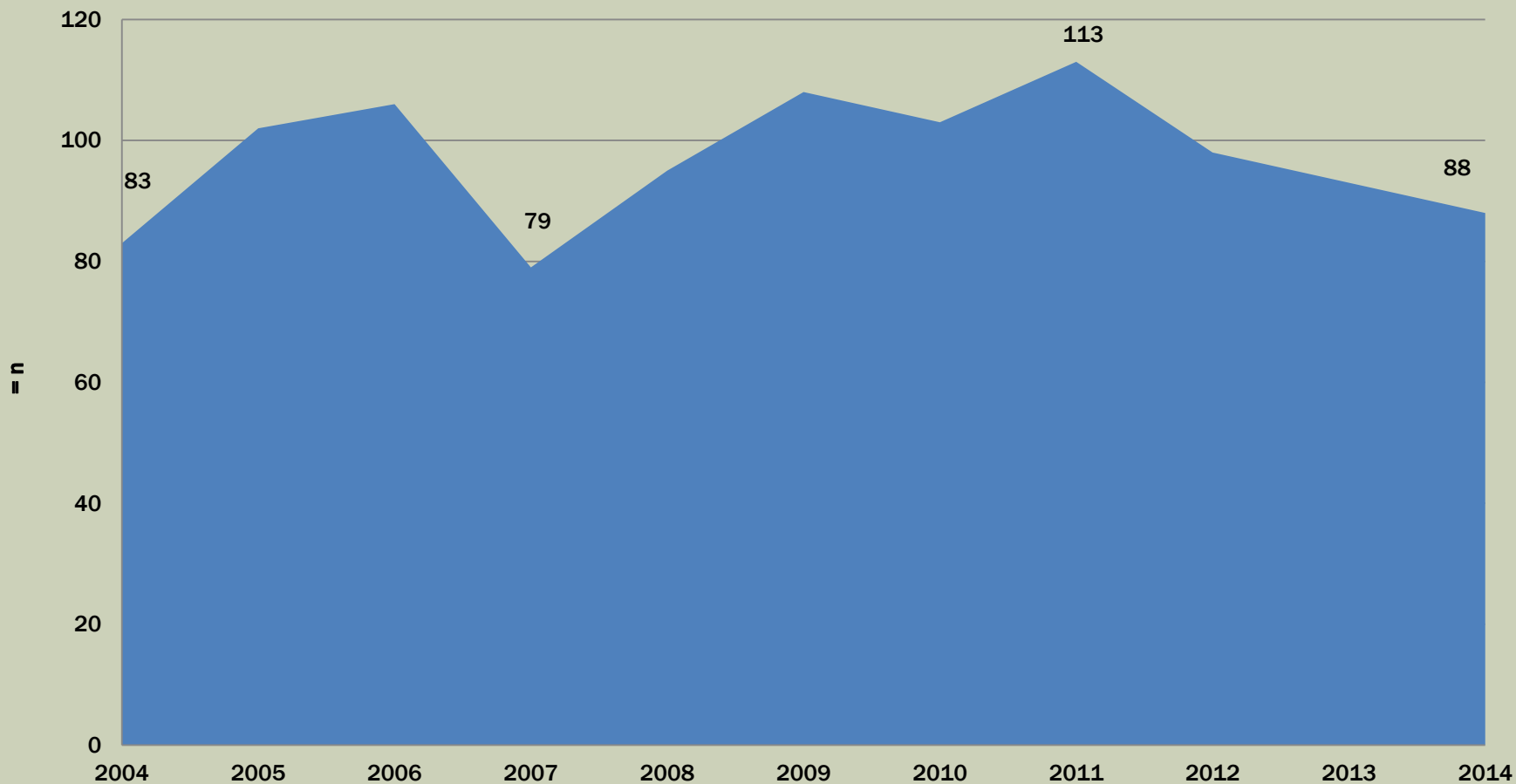


STATISTICS 2014

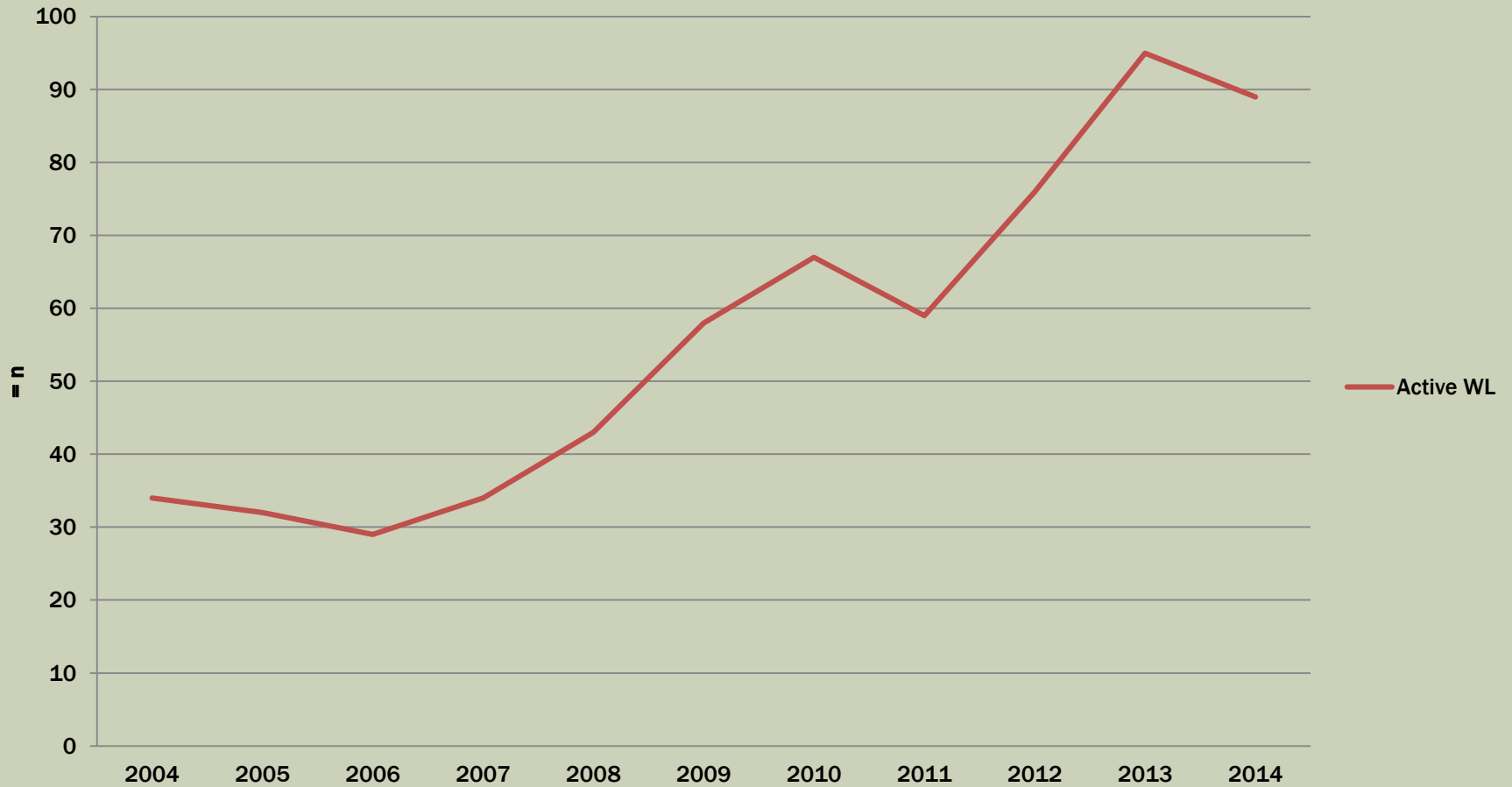
WAITINGLIST (WL)
TRANSPLANTS (DECEASED DONORS)
MORTALITY



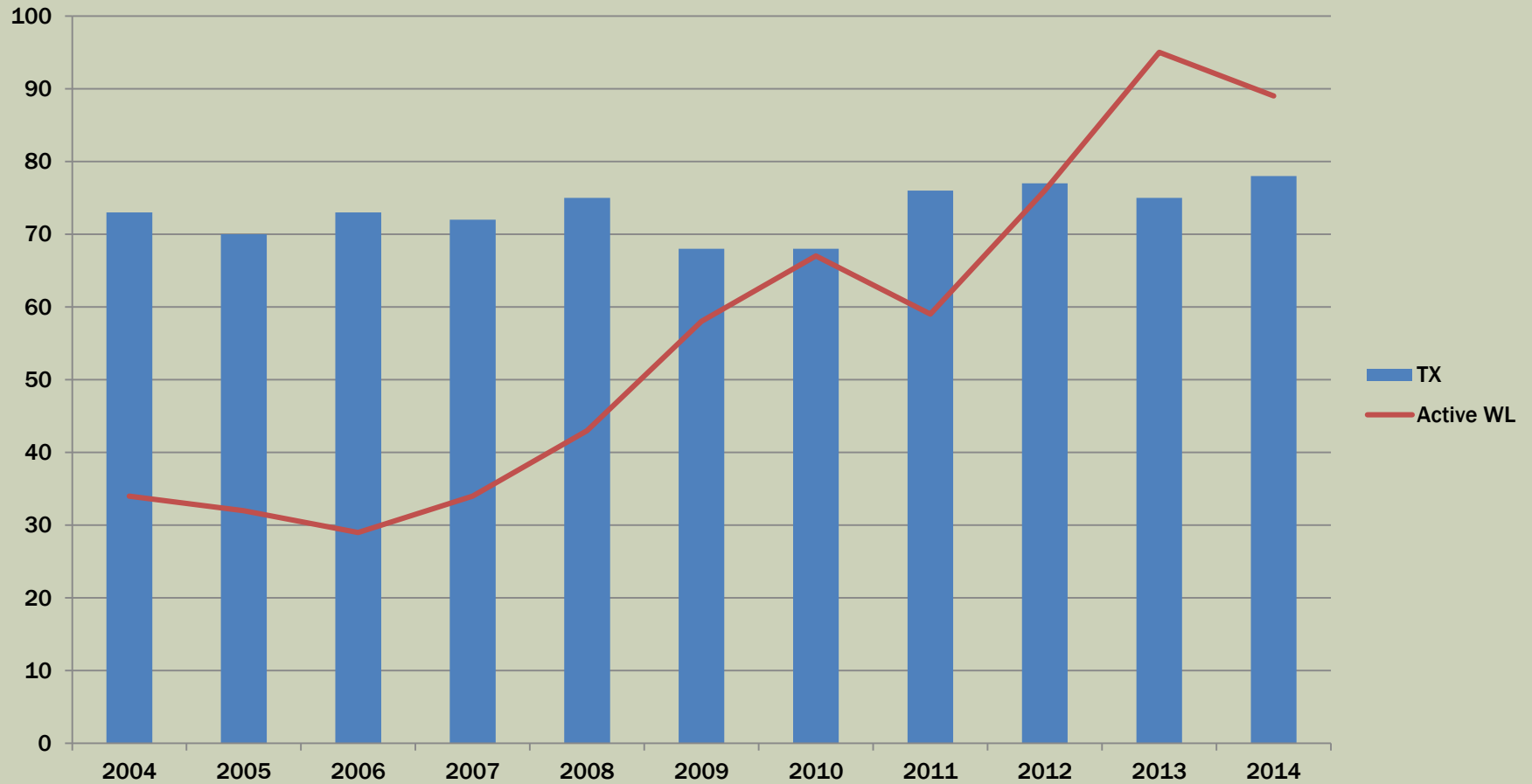
MORTALITY ON WAITINGLIST FOR ALL ORGANS 2004 - 2014



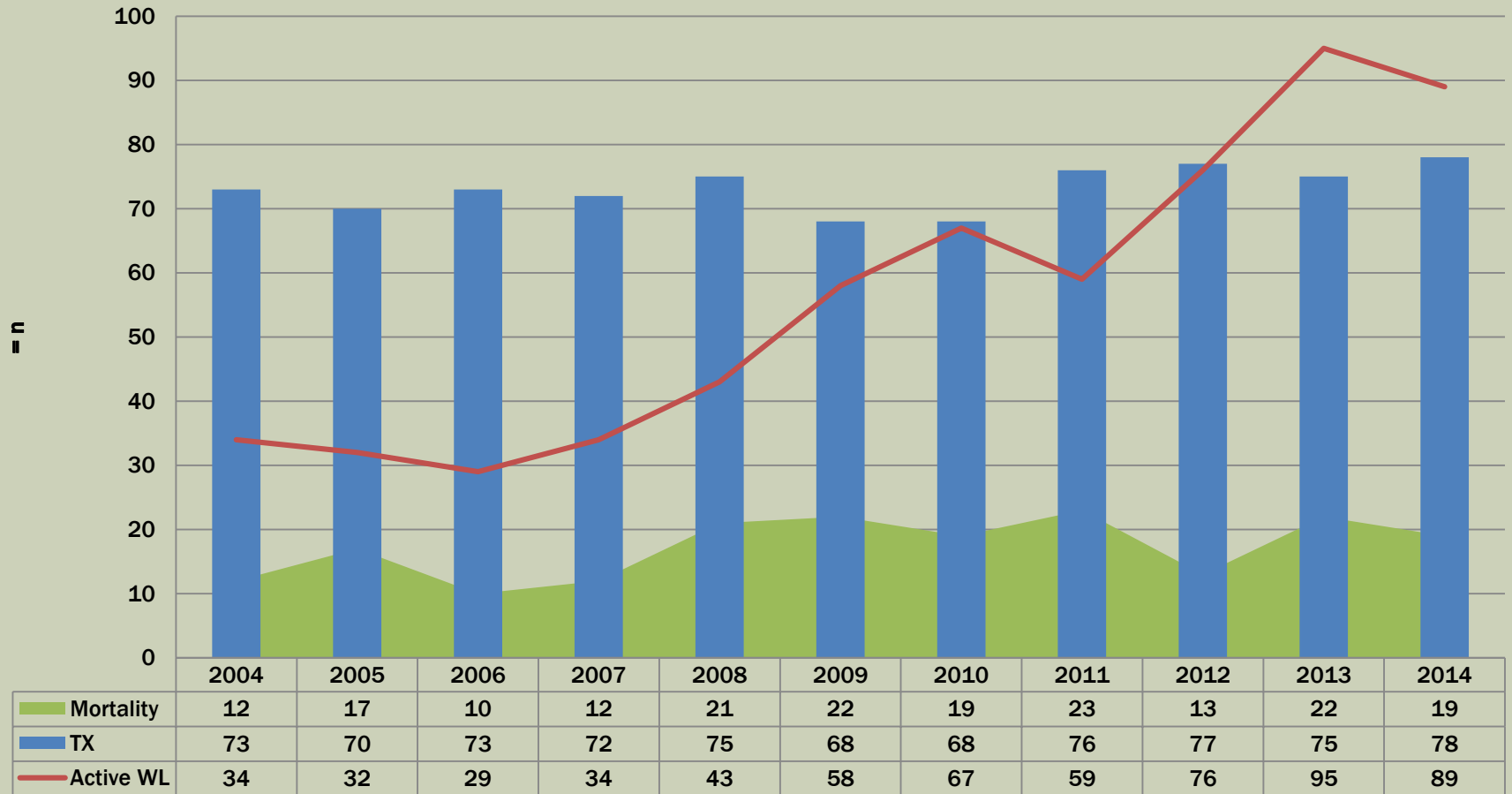
HEART 2014



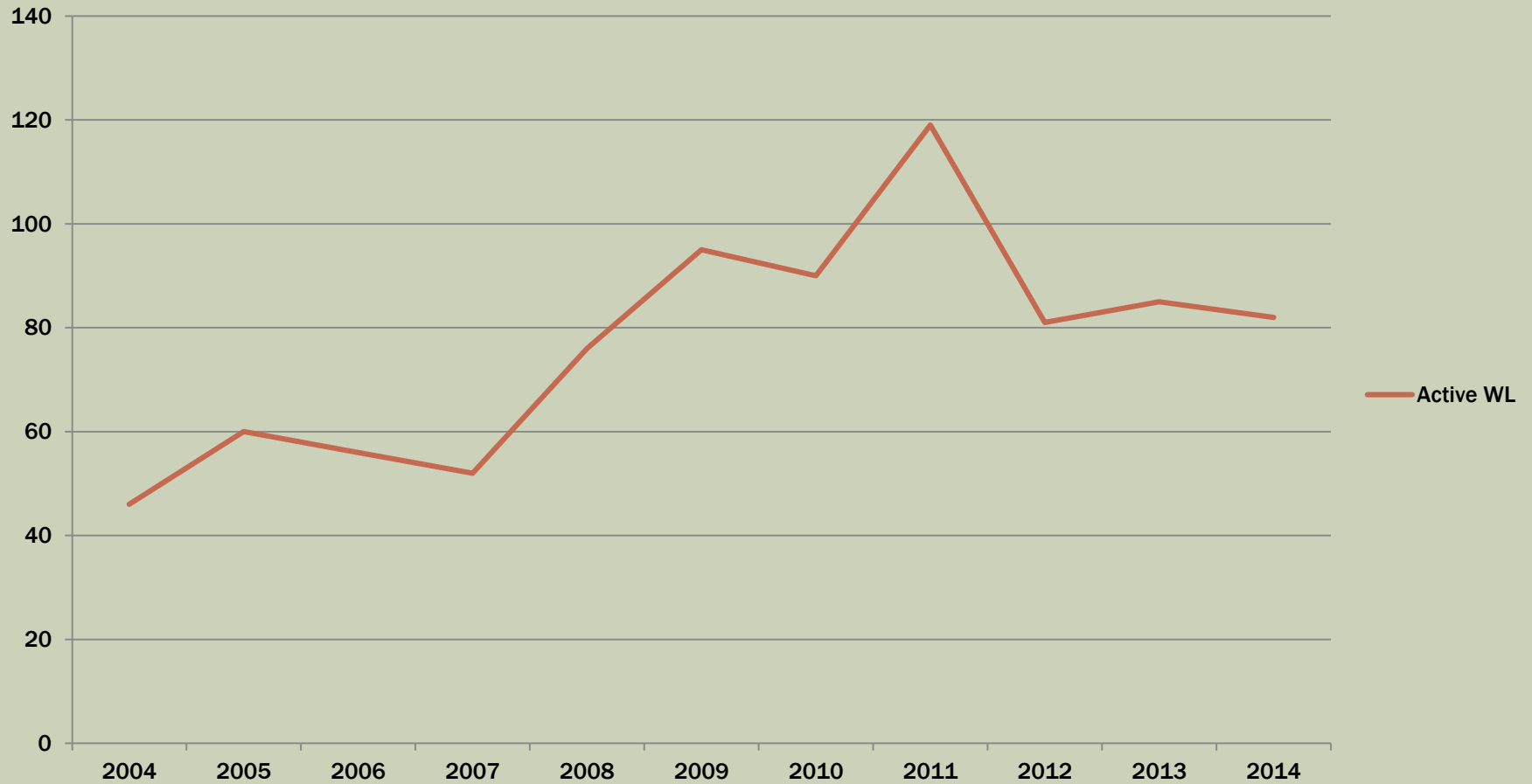
HEART 2014



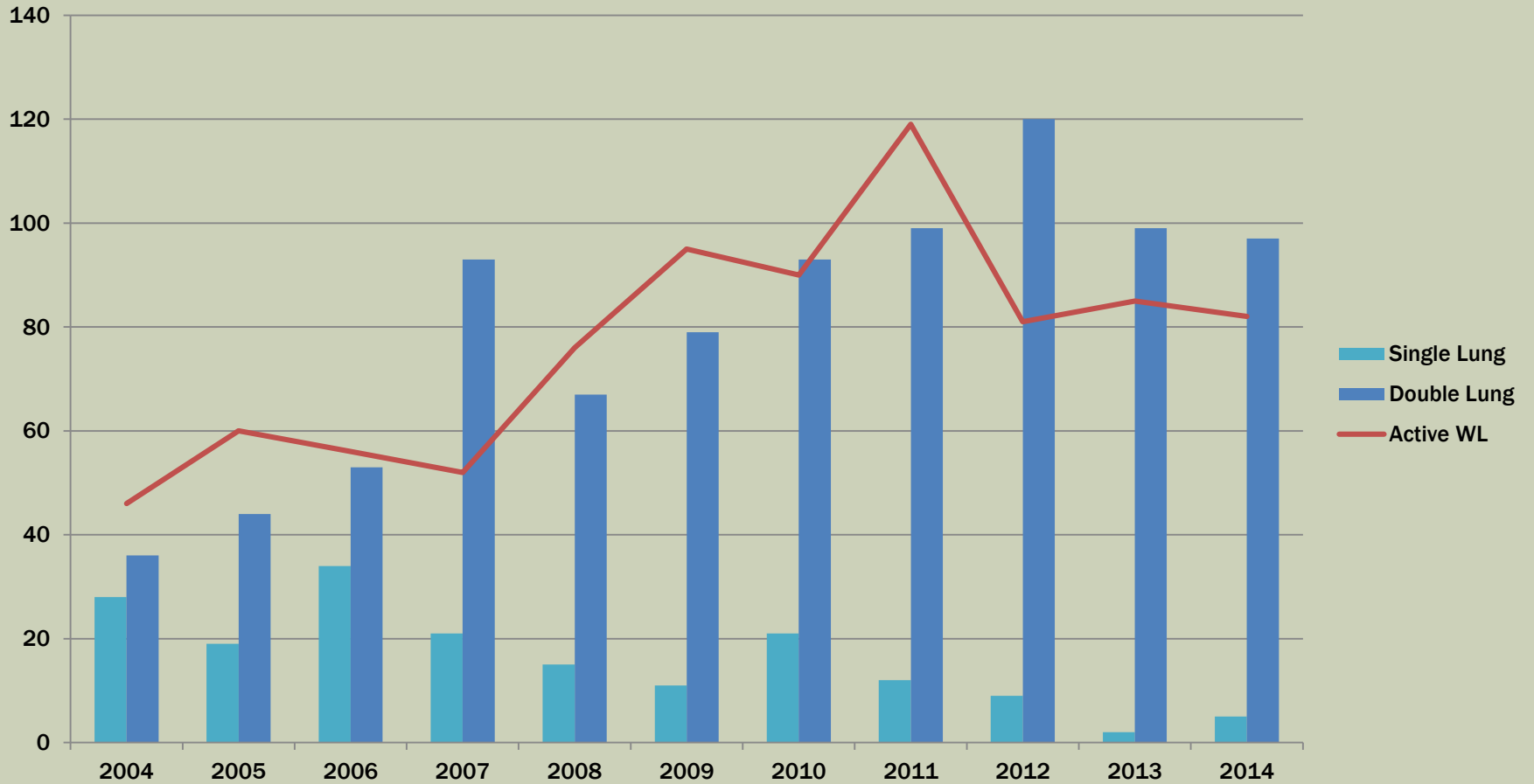
HEART 2014



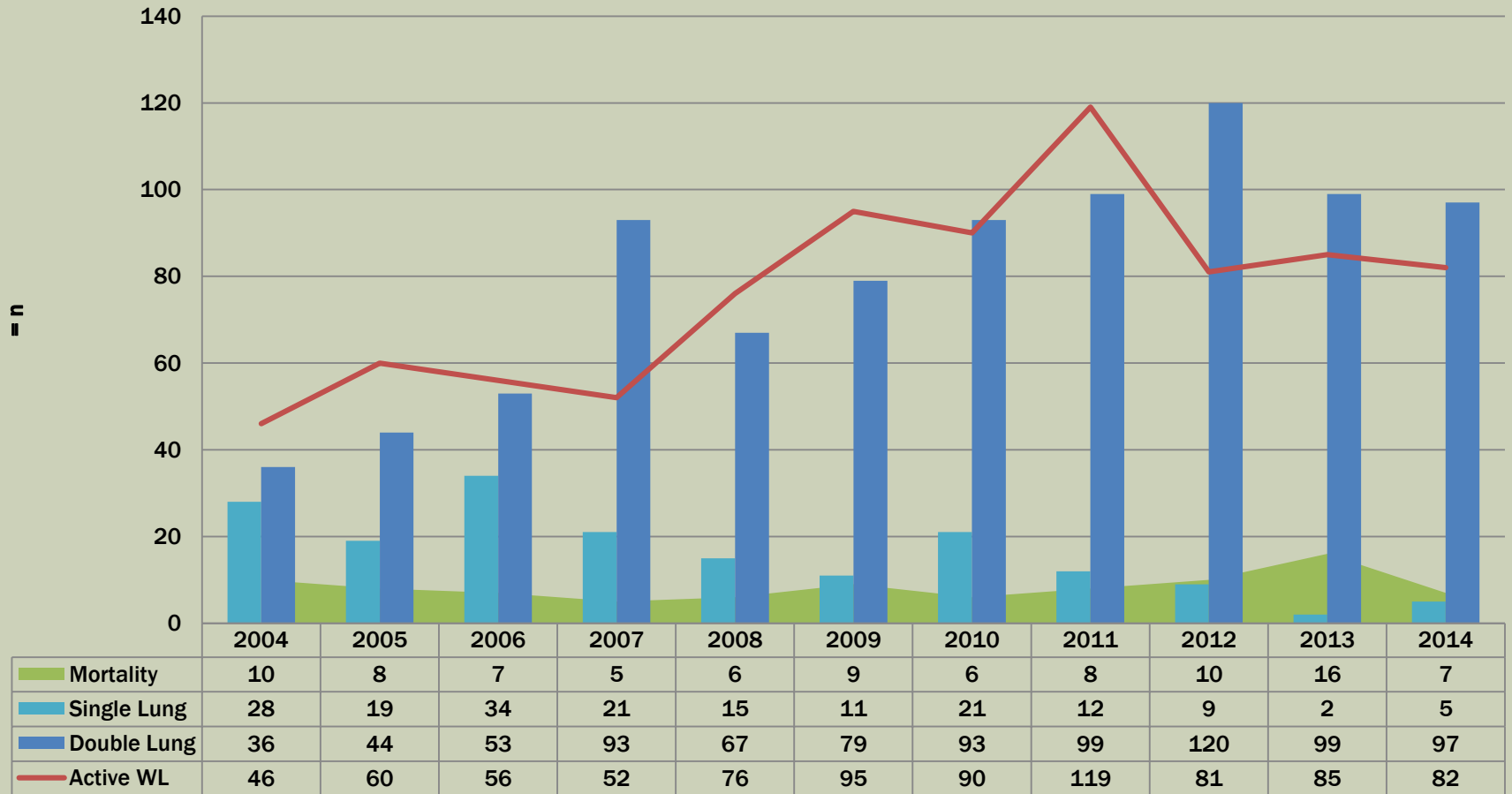
LUNG 2014



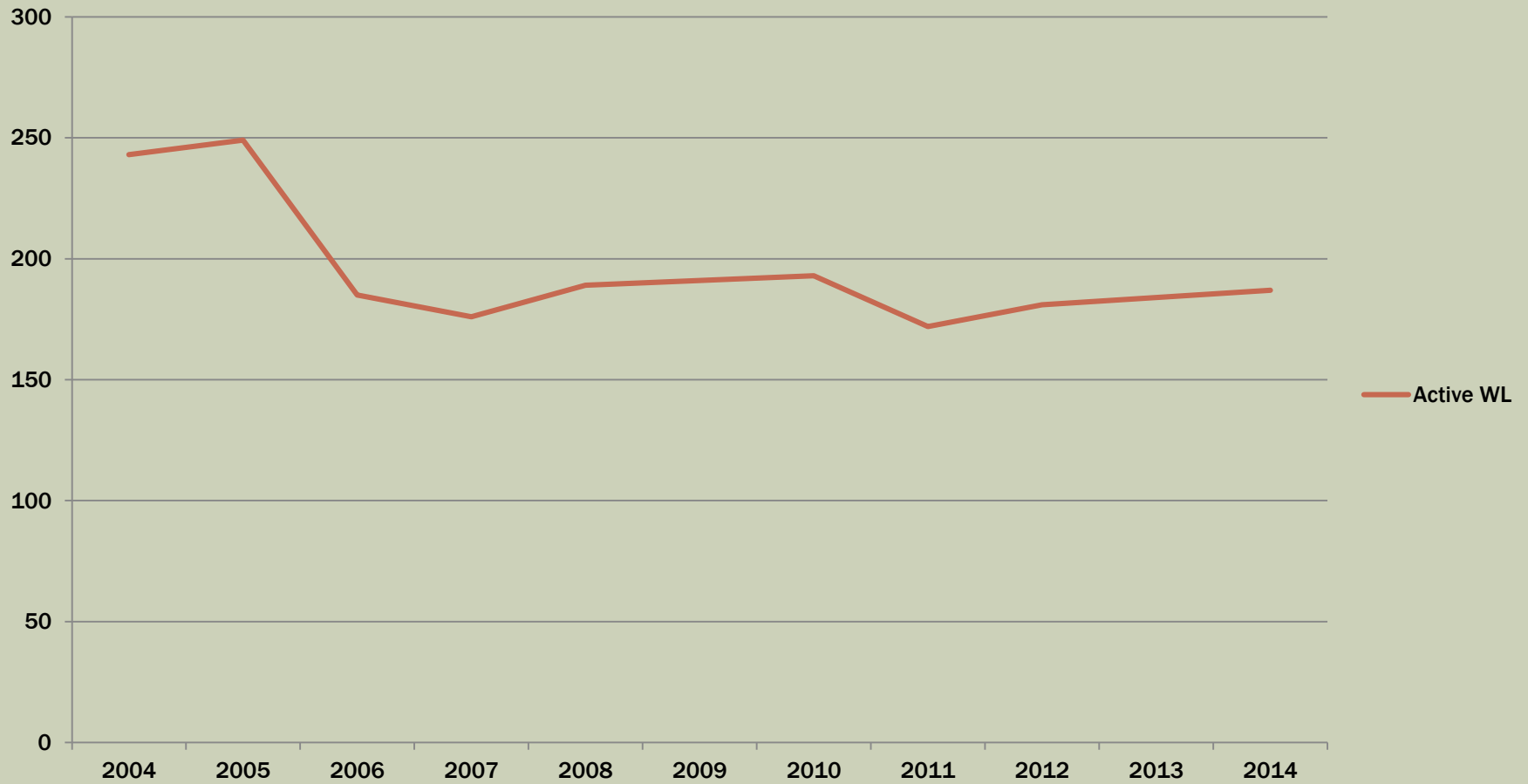
LUNG 2014



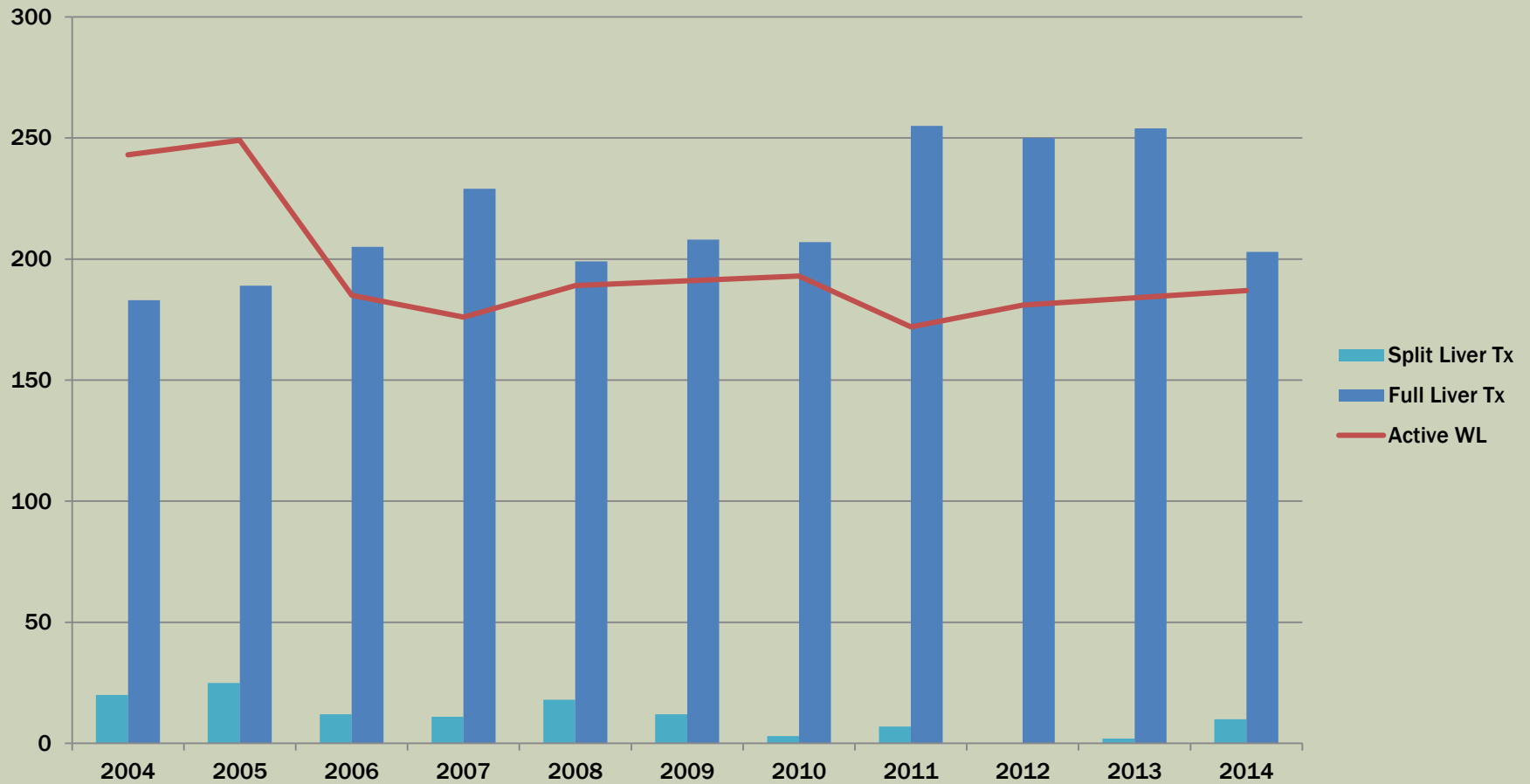
LUNG 2014



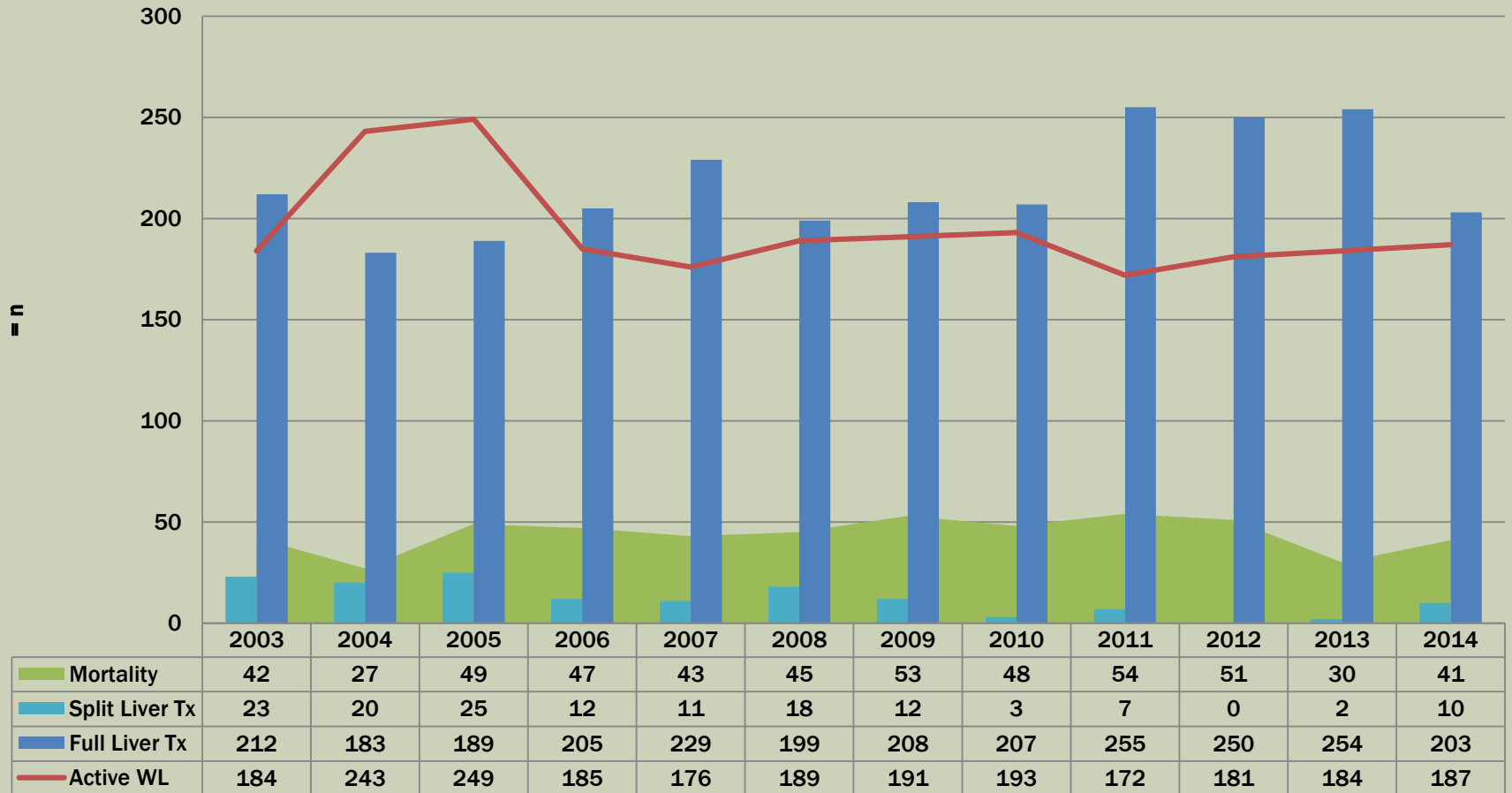
LIVER 2014



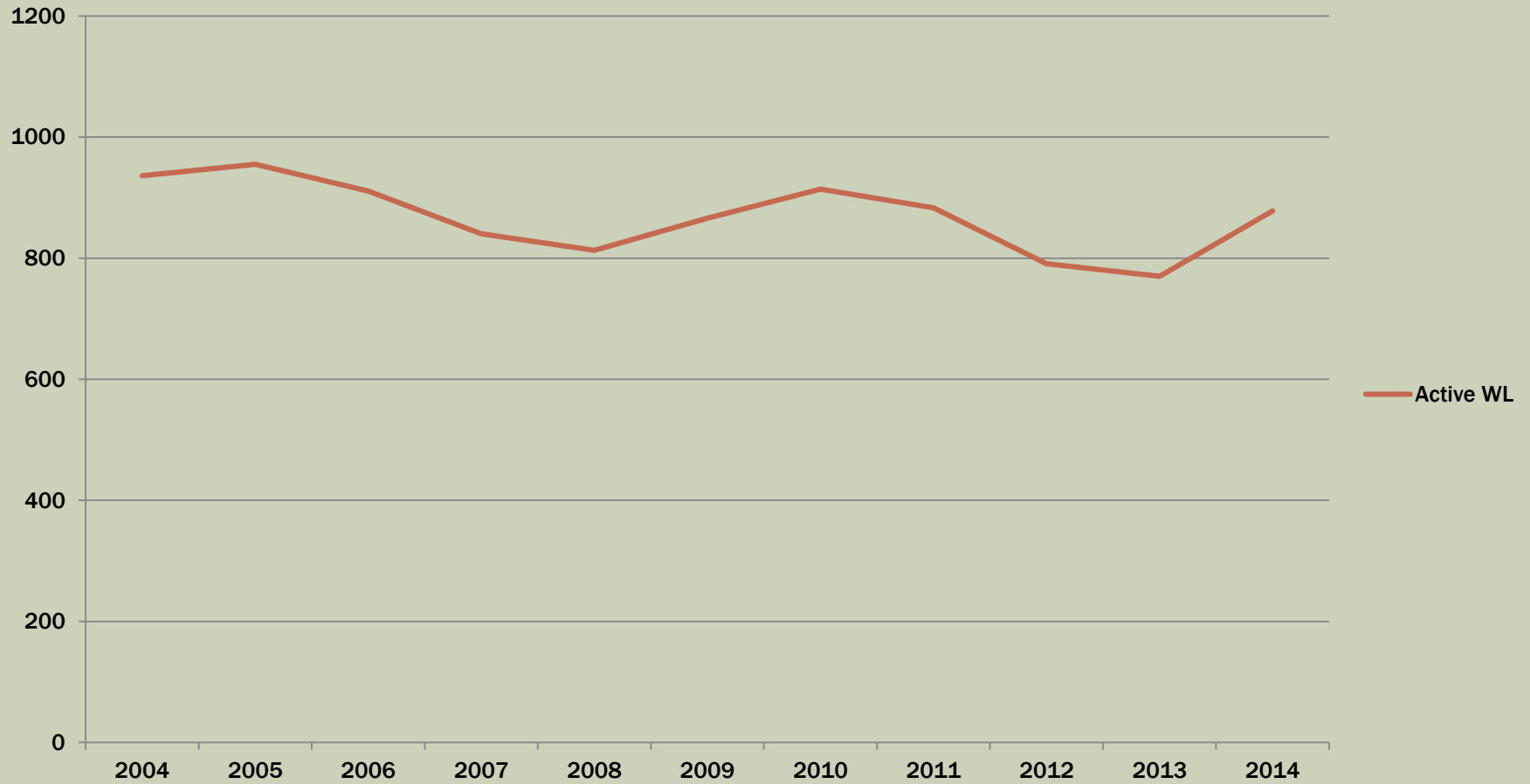
LIVER 2014



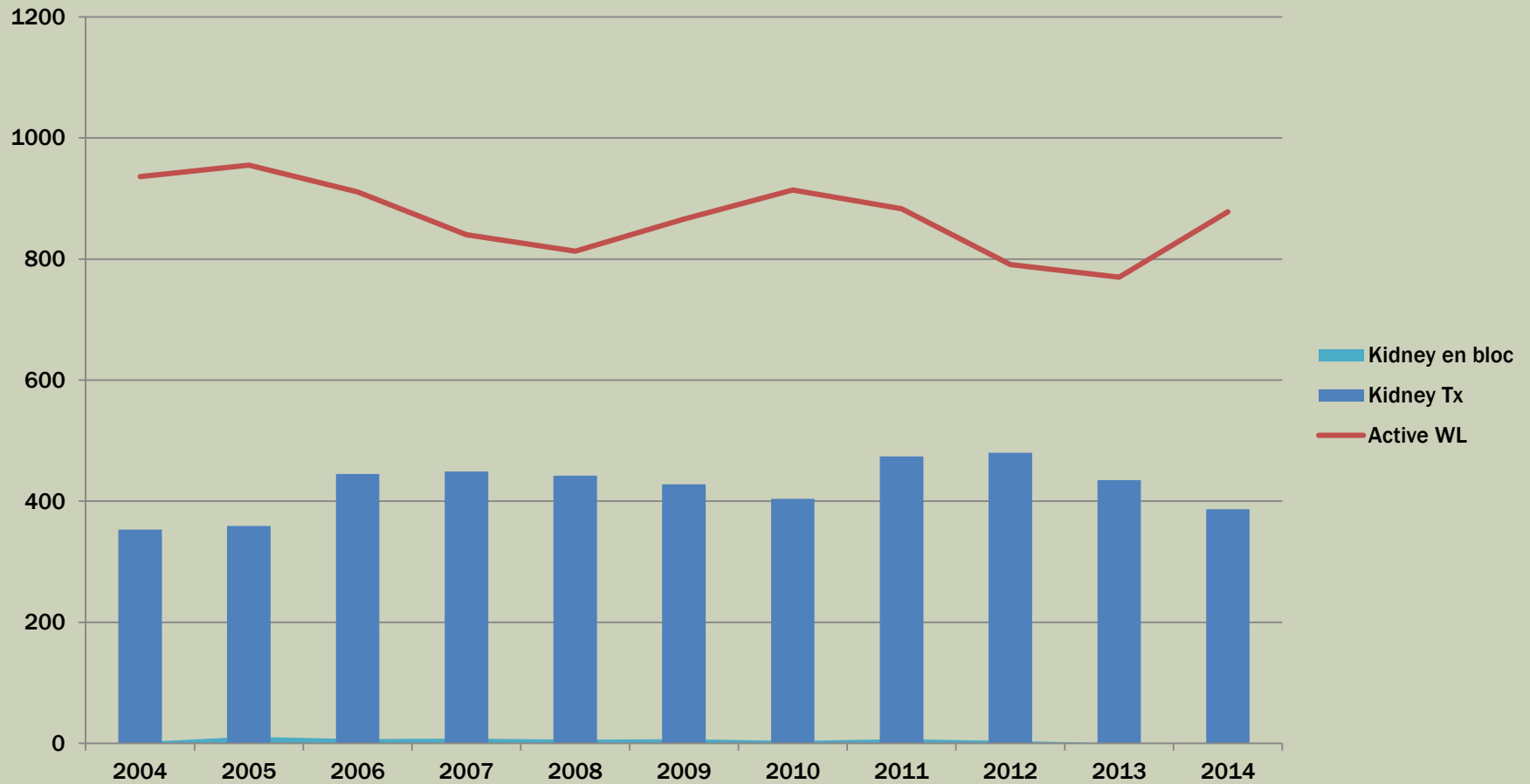
LIVER 2014



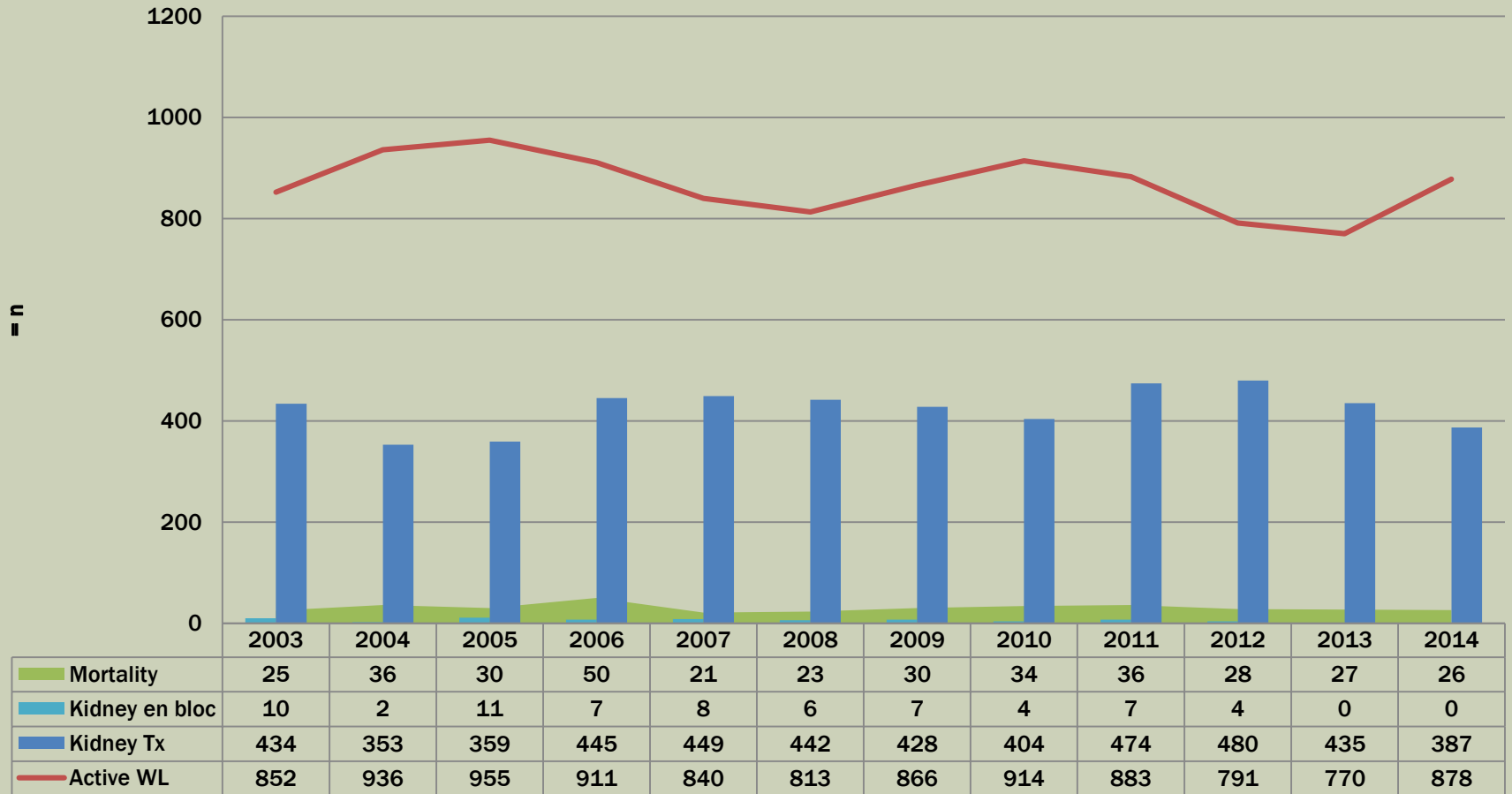
KIDNEY 2014



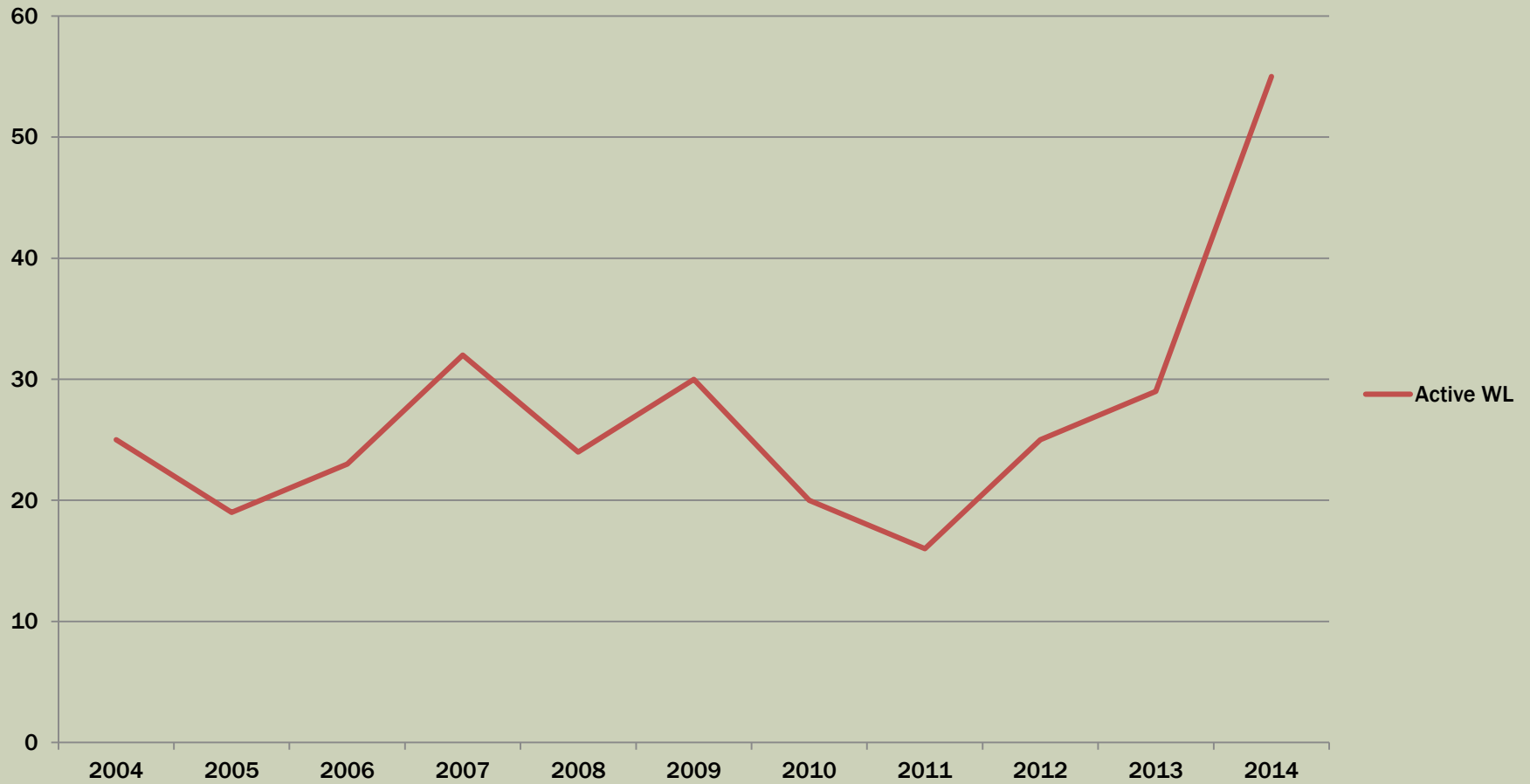
KIDNEY 2014



KIDNEY 2014

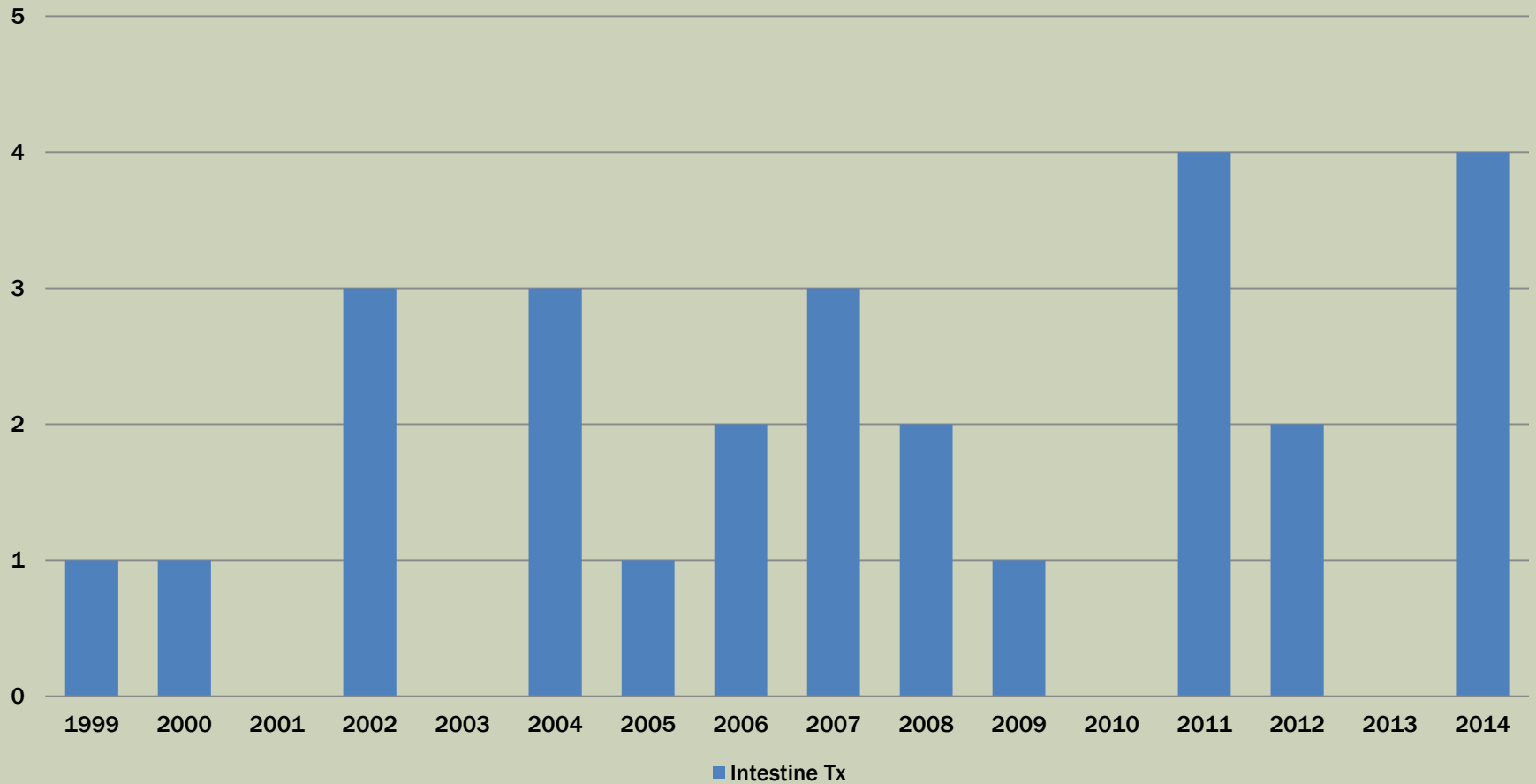


PANCREAS 2014

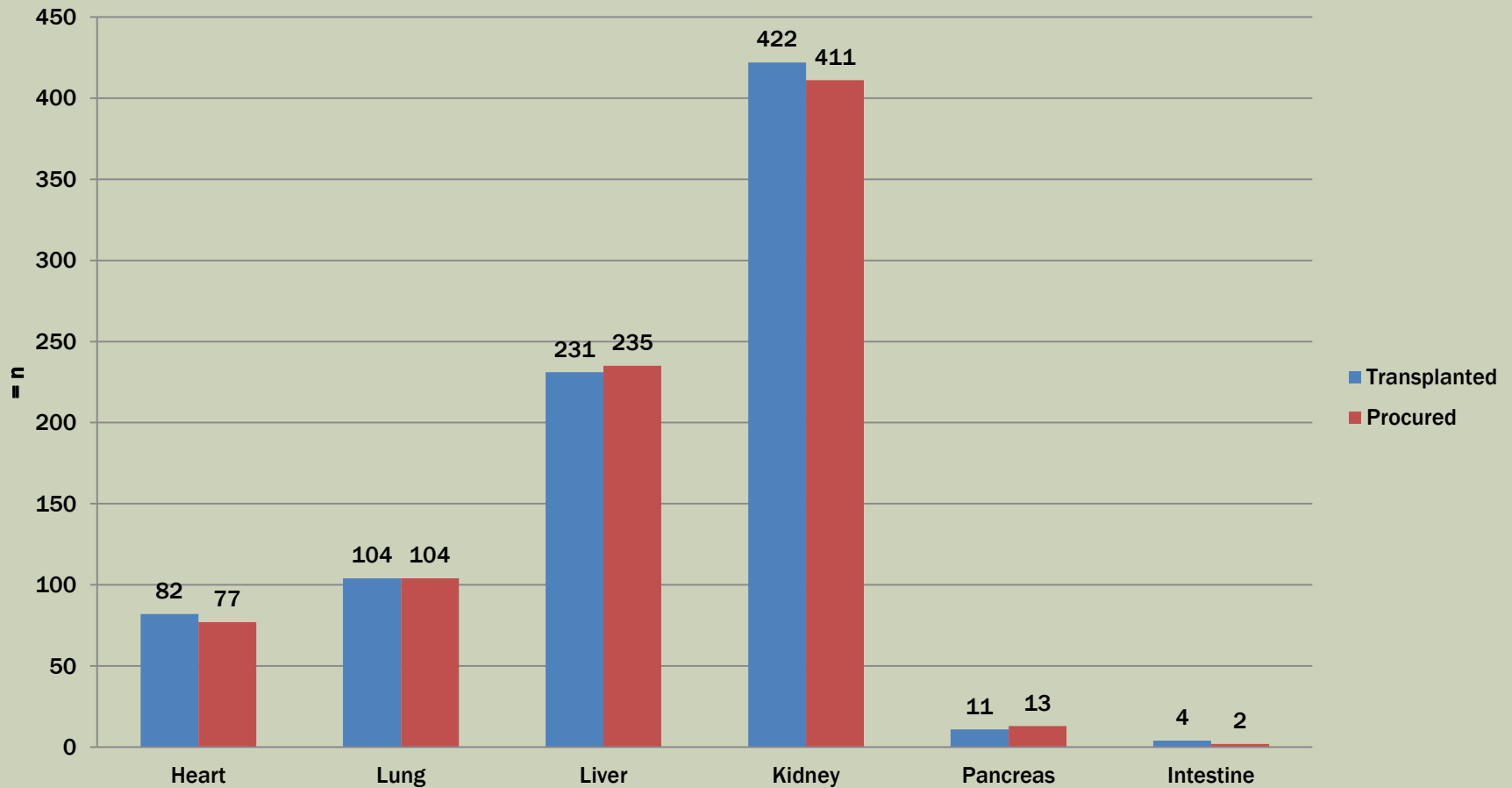


INTESTINE

1999 - 2014



TRANSPLANTED VS PROCURED ORGANS 2014

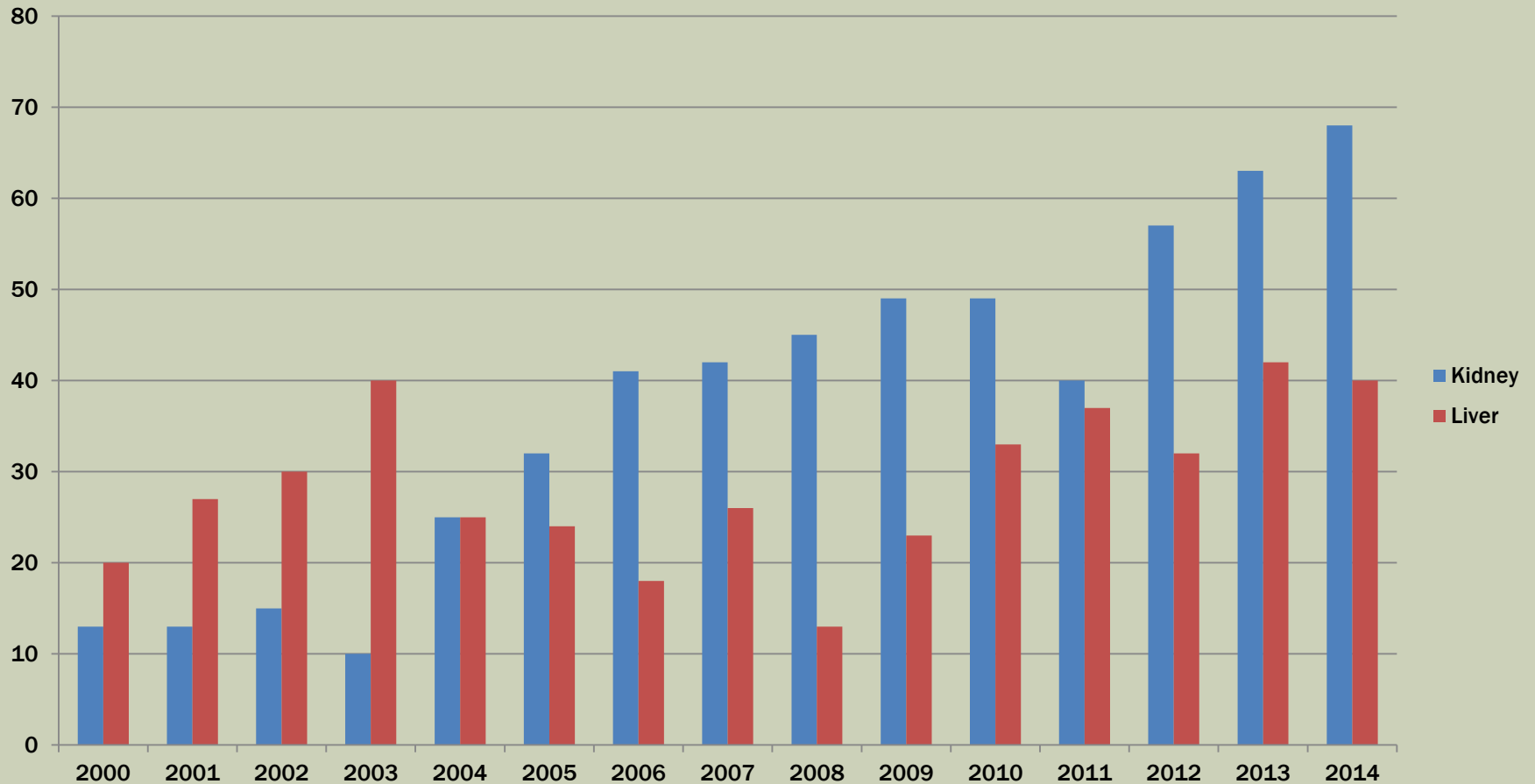


Remark Liver: procured incl 7 livers for split (= 14)

LIVING DONOR

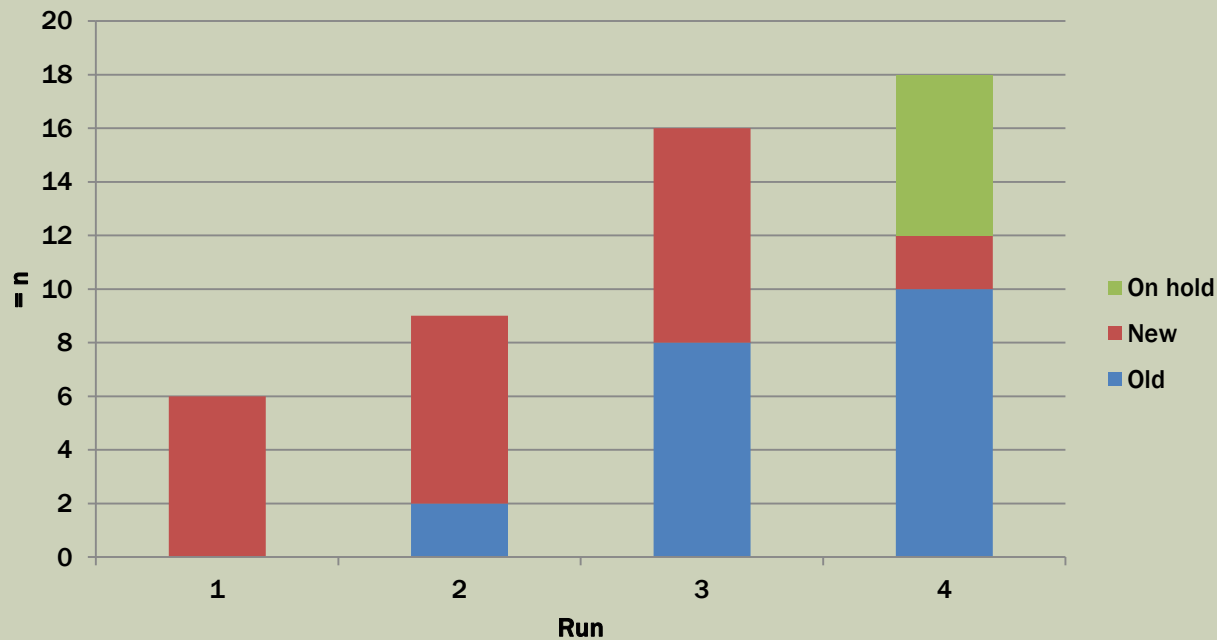


LIVING DONOR TRANSPLANTS



LIVING DONOR EXCHANGE PROGRAM

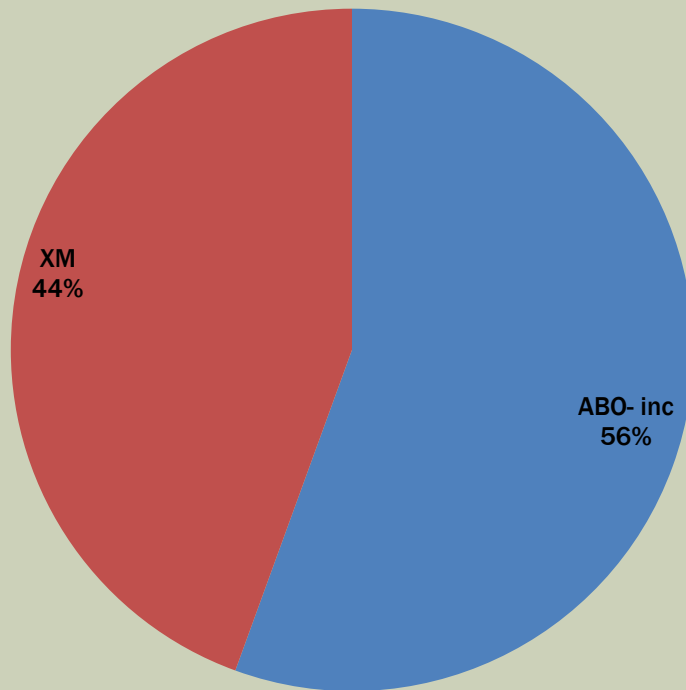
LDEP: overview Runs 2013 - 2014



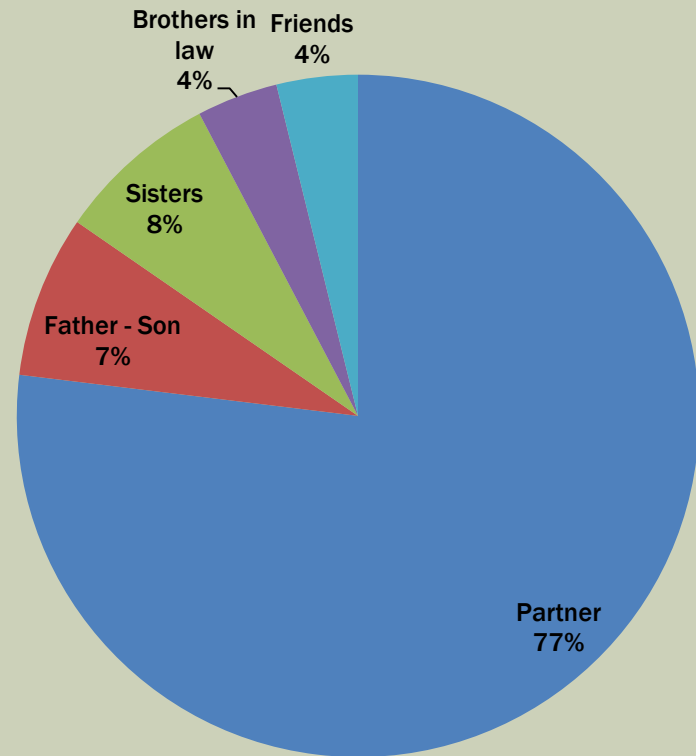
- Start coördinator Nelly Mauws februari 2013
- Run 1: 6 couples (april 2013) – Run 4: 18 couples (march 2015)
- 2013 – 2015: 4 runs / 26 couples

LIVING DONOR EXCHANGE PROGRAM

Reason of participating



Relationship donor - recipient



LIVING DONOR EXCHANGE PROGRAM

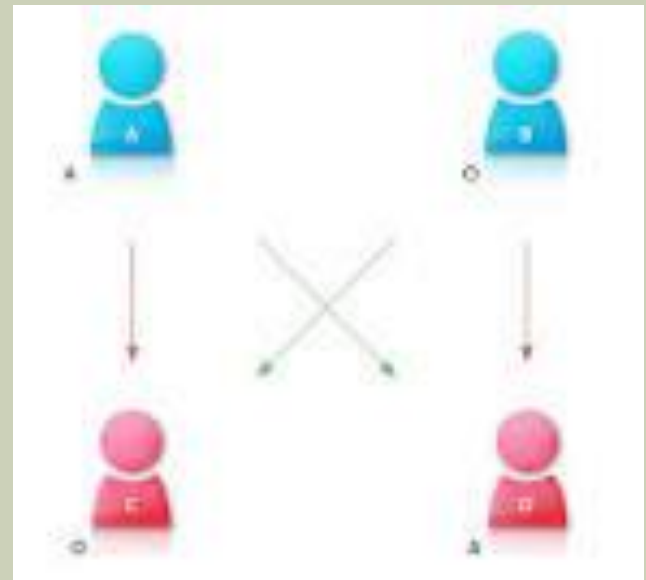
■ Result

■ April 2014

➔ Tx with 2 couples

■ March 2015

➔ Tx with 3 couples



SUMMARY



REMARKS

ORGAN DONATION

- Persisting positive registrations in the national registry
- Family refusals increases slightly (12,6%)

REMARKS

TRANSPLANTATION

■ HEART

- Increase transplantations
- Decrease waitinglist
- Lower mortality on the waitinglist

■ LUNG

- Waitinglist and transplantation are stable
- Mortality decreased by half

■ LIVER

- Less transplantations in total - more split transplantations
- Waitinglist remains stable
- Increase of mortality
- Living donation stable

REMARKS

TRANSPLANTATION

■ Kidney

- Less transplantations
- Increase of the waitinglist
- Small increase in living donation
- First transplantation in the LDEP

■ Pancreas

- Slight increase of transplantations, but still low number of transplantations
- Doubling of the waitinglist

THANK YOU FOR YOUR
ATTENTION

